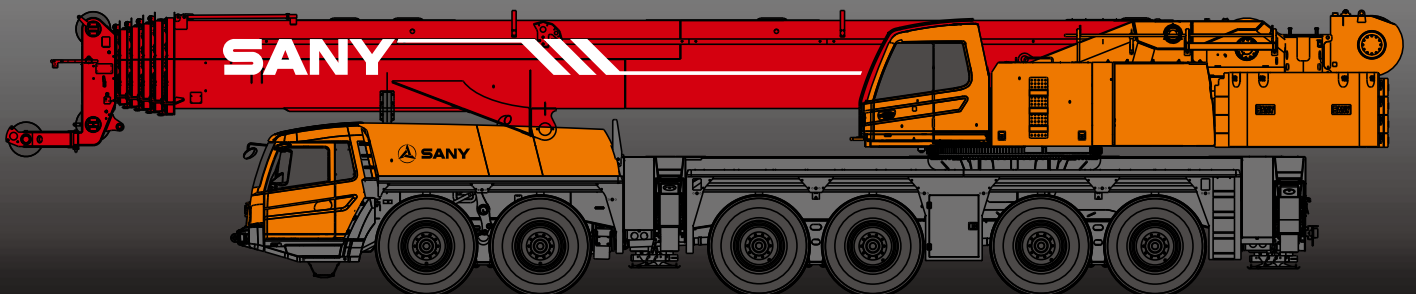


# SAC2600

SAC2600 ALL-TERRAIN CRANE  
260 TONS LIFTING CAPACITY

Quality Changes the World



**SANY**

SANY Automobile Hoisting Machinery is one of the core business unit of Sany Heavy Industry, mainly engaged in the research and development of high end, mid to large tonnage crane series, including mobile crane, crawler crane, tower crane and loader crane. It has two industrial parks in Ningxiang and Huzhou, since entering the market, the products of Sany Automobile Hoisting Machinery have received worldwide recognition with advanced technology, lean manufacturing, high reliability and excellent service.







# SANY ALL-TERRAIN CRANE

## CONTENT

04	Icon
05	Selling points
06	Introduction
09	Dimension
10	Technical Parameter
11	Operation Condition
12	Load Chart
33	Wheel Crane Family Map



Cab



Carrier frame



Suspension system



Hydraulic system



Outriggers



Telescopic boom



Control system



Engine



Lattice jibs



Telescopic system



Transmission system



Superlift devices



Luffing system



Drive/Steer



Luffing lattice jib



Slewing



Axles



winch mechanism:



Counterweight



Tyres



Safety system



Brakes system



Hoist system

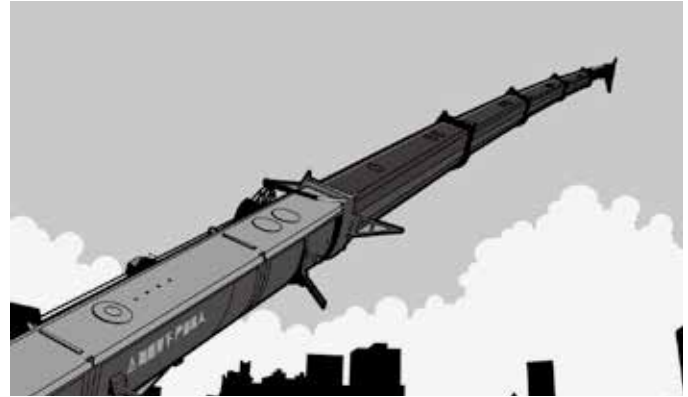


Electrical system



### Excellent and stable chassis performance

The use of innovative 6-axle chassis design with six driving modes and four braking modes can provide more reliable traveling performance. High stability and safety are guaranteed with tipping over early-warning technology.



### Ultra long Boom for Wide Working Radius

Fully-extended boom is 73m and luffing jib is 43m respectively, which ensures Max. lifting height of 112m with working radius of 86m. 0°~40° automatic infinite variable luffing jib is applied to ensure conveniently switching over between all operation with high efficiency.



### Highly efficient, energy-saving and unique hydraulic control technology

Self-developed dual-pump converging / diversion main valve is used. Converging flow of the single-action dual-pump ensures fast operation and high work efficiency, combined-action dual-pump diversion system is applied to ensure stable controllability. Electric proportional variable piston pump is used to ensure high-accurate flow control and higher efficiency and energy saving.



### Safe, stable, advanced, and intelligent electronic control technology

The adoption of internationally advanced distributed integration bus data communication network and configuration of the abundant sensing elements can achieve timely feedback of data information and monitor the overall working status in real-time. The human-computer interaction interface is used to fully meet customer's individual requirements.

## Superstructure

### Cab

- It is made of safety glass and anti-corrosion steel plate with ergonomic design such as full-coverage soften interior, panoramic sunroof and adjustable seats etc., and humanized design providing more comfortable and relaxing operation experience. The display of load moment limiter integrates main console and operation display system, which clearly show the data of all operating superstructure conditions for lifting operation.

### Engine

- Type: Inline six-cylinder, water cooled, supercharged and inter-cooling diesel engine
- Rated power: 242kw/2100r/min
- Environment-protection: Emission complies with EuroIII standard
- Capacity of fuel tank: 280L

### Hydraulic system

- High-quality hydraulic components such as main pump, slewing pump, main valve, winch motor, balance valve etc., are equipped to ensure the stability and reliability of the system. Precise parameter matching makes the control performance excellent. The electrical proportion variable piston pump is adopted and the oil flow is controlled by the electrical joystick to achieve real-time flow control and prevent energy waste. The dual-pump confluent/separate mode is designed by SANY itself and dual-pump confluent is more efficient for combined operations and dual-pump separate for single operation.
- The use of dead-weight lowering compensation hydraulic system ensures excellent lowering micro-mobility and stability.
- Single-cylinder pin telescopic system is used for boom.
- Jib is equipped with luffing cylinder to achieve 0°~40°infinitely luffing.
- Closed slewing system is used with flow and direction changed through adjusting the angle of the swash plate of the variable pump, thus ensuring the excellent micro-mobility and stable rotation.
- Capacity of hydraulic oil tank: 1050L.

### Control system

- With 24V DC power supply, the PLC integrated programmable controller and CAN-bus control network can be used to achieve logic control and electro proportional control of the system through combining with the common electricity.
- With real-time monitoring and fault self-diagnosis system.
- Lifting, slewing, and luffing can be controlled by two auto-reset multidirectional electro proportional handles. Lifting of counterweight, shifting of cab, and locking of rotating bed can be controlled through the keys on the control panel.
- Display can be connected with the controller via CAN-bus with main functions as follows: digital adjustment and display of the electro proportional control parameters, display of fault code of the electro proportional system, and real-time data display by the hydraulic system.

### Luffing system

- The top single-cylinder luffing is applied with luffing angle ranging from -0.4° to 82°. Hydraulic system adopts the dual-pump converging open hydraulic circuit to achieve large-angle fast lowering and small-angle stable and slow lowering operations combining with electro proportional control, power lowering and self-weight luffing.

### Telescopic system

- It consists of six section booms welded with bended fine-grain high-strong steel plate, with oval section applied to ensure good buckling resistance performance. With single-cylinder automatic pin system, a dual-action cylinder can control telescopic operation of all booms and achieve a variety of boom combinations.
- Basic boom length is 15.65m and full length of boom is 73m. Max. lifting height is 73.5m.

### Lattice jibs

- The fixed jib is variable from 12.2m to 43m according to the combination and it is luffing free from 0-40°according to the actual working condition. The max. lifting height is 112m.

## Superstructure



### Slewing system

- It consists of constant displacement motor and slewing reducer with mature technology. 360° full-rotation can be achieved through external gearing with slewing ring, with slewing speed of 0-1.6rpm and with infinitely variable speed adjustment. Slewing hydraulic system adopts the closed system, which not only avoids throttling loss of the open system but also ensures a high efficiency. Emergency brake can be achieved through electro proportional brake pedal.



### Hoisting system

- Planet-gear speed reducer and special groove winch drum are driven by hydraulic motor with brake installed internally.
- Wire rope lock: High-quality wire rope lock with casting at end is applied. It is installed in the lock sleeve directly, which improves the replacement speed of the lifting rate.
- Spec. of wire rope:  $\phi 24$ -2160, non-rotating.
- Length: About 400m.
- Max. single rope speed (outer layer): about 130m/min.



### Safety system

- Load moment limiter: With analytical mechanics method, the load moment limiter calculation system is established based on the load mechanical model. Therefore, the rated hoisting accurate can be up to  $\pm 3\%$  through on-line non-load calibration.
- Hydraulic system is configured with the balance valve, overflow valve, and two-way hydraulic lock etc. ensuring stable and reliable operation of the hydraulic system.
- Main and auxiliary winches are configured with 3-wraps protectors to prevent over roll-out of wire rope.
- Boom and jib are configured with height limiter at end to prevent over-hoist of the wire rope.
- Boom head is equipped with anemometer to detect whether the high-altitude wind speed is within the allowable range.



### Counterweight

- Combined variable counterweights are used with 0t,12.5t,27t,41.5t,56t,80t,100t seven combinations to meet requirements of different operating conditions and maximize structural parts performance , which can be self-assembled and disassembled remotely with good micro-mobility.

## Chassis



### Cab

- Cab is made of new steel structure self-developed by SANY, featuring excellent shock absorption and tightness, which is configured with swing-out doors at both sides, pneumatically suspended driver's seat and passenger seat, adjustable steering wheel, large rearview mirror, comfortable driver chair with a headrest, anti-fog fan, air conditioner, stereo radio, and complete control instruments and meters, providing more comfortable and safe operation experience.



### Carrier frame

- Designed and manufactured by SANY, anti-torsion box structure is welded by fine-grain high-strength steel plate to provide strong load bearing capacity.



### Axles

- Full-axle steering is applied with axles 1, 3, 5 and 6 used for drive operation and with axles 1, 3, 5 and 6 equipped with differential locks for planetary transmission. Axles 1 and 2 adopt the bar-feedback hydraulic power steering systems and axles 3, 4, 5 and 6 adopt the electrohydraulic control steering system with assist in speed control and special steering mode optional applied, thus ensuring easy steering and flexible operation.

## Chassis

**Engine**

- Type: Electric controlled, V- type eight-cylinder, water cooled, supercharged and inter-cooling diesel engine.
- Rated power: 440kw/1800r/min
- Max torque: 2800Nm/1300rpm
- Environment-protection: Emission complies with EuroIV standard
- Capacity of fuel tank: 550L

**Transmission system**

- Gearbox: Manual / Automatic gearbox is adopted with 12-gear and large speed ratio range applied, which meets the requirements of low gradeability speed and high speed traveling.
- Transfer case: Transfer case with a large input torque is used with rated torque up to 30000N.m and with differential lock cylinder configured.
- Transmission shaft: With optimized arrangement of the transmission shaft, the transmission is more stable and reliable. For most optimized transmission, face-tooth coupling transmission shaft is used with large transmission torque.

**Brakes system**

- Brakes system includes traveling brake, parking brake, emergency brake, and auxiliary brake.
- Traveling brake: All wheels use the air servo brakes and dual-circuit brake system and are equipped with disk brakes.
- Parking brake: Force driven by accumulator is applied on the second to sixth axle.
- Emergency brake: Accumulator is used not only for cutting-off brake but also for emergency brake.
- Auxiliary brake consists of engine brake and exhaust brake etc. There are double brakes for the engine, hydraulic power retarder brake for reducer and eddy current retarder brake for four axle which ensure high safety and reliability of the travelling.

**Suspension system**

- Axle suspension devices adopt the height-adjustable oil-gas suspension devices equipped with the hydraulic lock, with stroke of suspension cylinder of +160/-130mm to achieve suspension, rigid locking, automatic leveling, overall lifting and lowering, single-point lifting and lowering modes. Load applied on each axle is no more than 12t. With good trafficability and adaptability of a variety of severe operating conditions and road, smooth and comfortable travelling and side stability of the vehicle are guaranteed.

**Steering system**

- Servo power steering gear and dual-circuit system hydraulic steering device are used with emergency steering pump equipped. Steering can be adjusted through regulating the speed. Axles 3 and 4 steering will stop from 30km/h and from 60km/h for axles 5 and 6.
- Six types steering modes: 1) Road running mode (default mode). 2) Full-wheel steering mode. 3) Crab-type mode; 4) Steering mode without deflection. 5) Independent rear-axle steering mode. 6) Steering mode with rear axle locked.

**Outriggers**

- Four-point supporting of the H-shaped outriggers ensures easy operation and strong stability with Max. span up to 8.95m×8.6m. Outrigger telescopic hydraulic system adopts the electro proportional control technology with wireless remote control configured. Outrigger control panel can display all loads with automatic level function to ensure high control precision and simple operation.

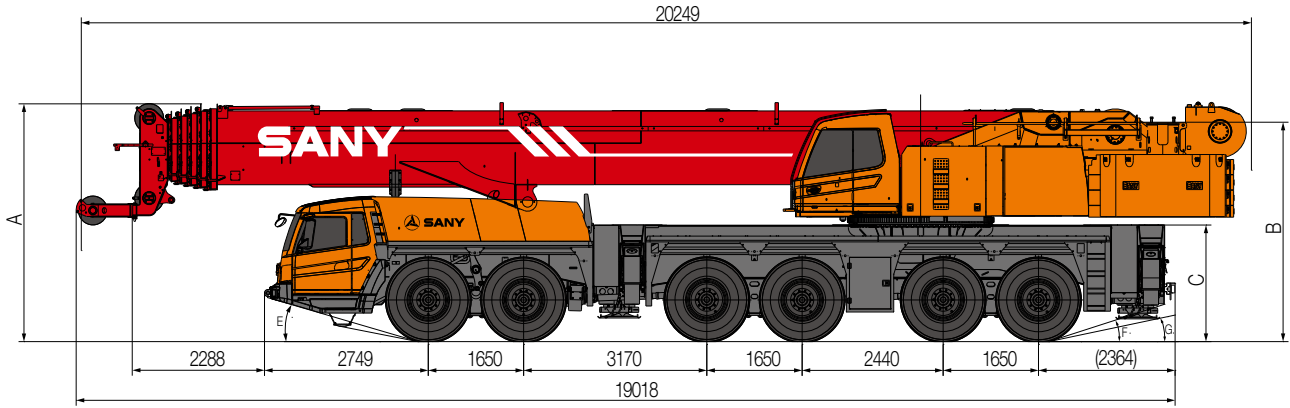
**Tyres**

- 12\*16.00R25

**Electrical system**

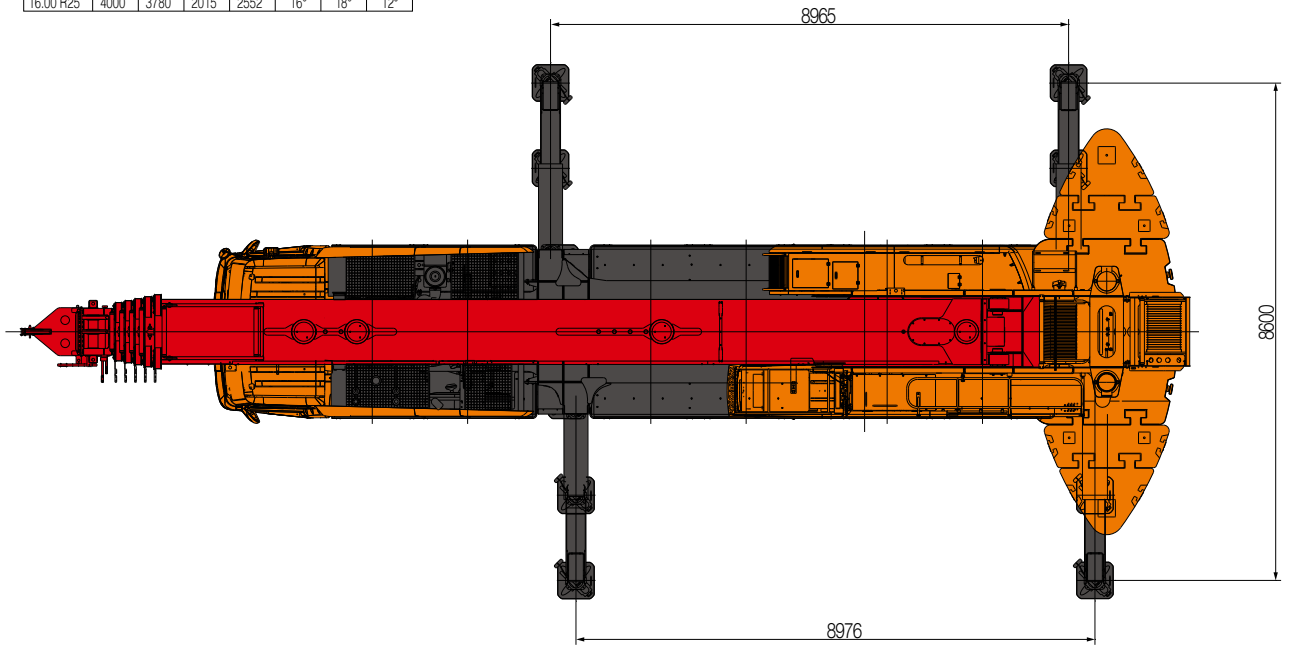
- With 24V DC power supply, cutting off power of the undercarriage can be achieved. Automotive lighting system is equipped. Vehicle actions such as throttle and outrigger control can be electrically controlled. Electrical system has strong detection, logic, and calculation capacity with fault self-diagnosis, centralized display and self-protection function.
- Chassis adopts CAN-bus system. Multifunctional centralized display system is used. Power consumption is small with maximum value of only 5w. Four functional keys are provided on the user interface. LCD display is used with adjustable contrast ratio.





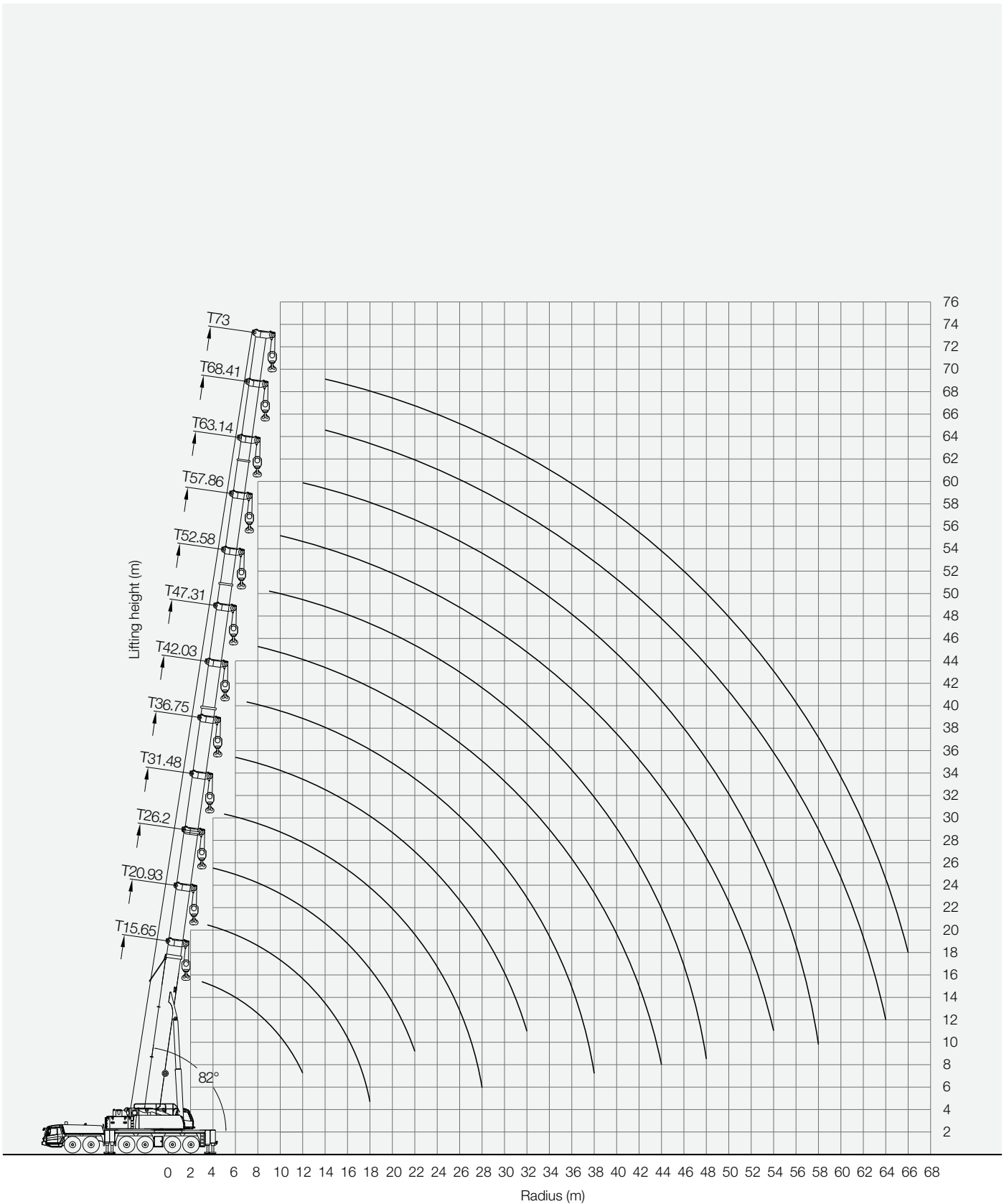
Dimension(mm)

Tyre Size	A	B	C	D	E	F	G
14.00 R25	3940	3720	1955	2564	14°	12°	10°
16.00 R25	4000	3780	2015	2552	16°	18°	12°



**SAC2600 ALL-TERRAIN CRANE**  
**TECHNICAL PARAMETER**

Type	Item	Parameter	
Capacity	Max. lifting capacity	260 t	
Dimensions	Overall length	18200 mm	
	Overall width	3000 mm	
	Overall height	4000 mm	
	Axle distance	Axle-1, 2	1650 mm
		Axle-2, 3	3170 mm
		Axle-3, 4	1650 mm
Axle-4, 5		2440 mm	
Axle-5, 6		1650 mm	
Weight	Overall weight	72000 kg	
	Axle load	Axle load-1, 2, 3	12000 kg
		Axle load-4, 5, 6	12000 kg
Engine	Rated power (Chassis)	440 kW/1800 rpm	
	Rated torque (Chassis)	2800 N.m/ 1300 rpm	
	Rated power (Superstructure)	242 kW/2100 rpm	
	Rated torque (Superstructure)	1385 N.m/ 1100-1500 rpm	
Traveling	Max.traveling speed	80 km/h	
	Turning radius	Min.turning radius	12 m
		Min.turning radius of boom head	14.4 m
	Wheel formula	12 × 8	
	Min.ground clearance	360 mm	
	Approach angle	16 °	
	Departure angle	18 °	
	Max.gradeability	49%	
Fuel consumption per 100km	≤ 114 L		
Main Performance Data	Temperature range	- 20 °~ + 50 °	
	Min.rated range	3 m	
	Tail slewing radius of swingtable	5735 mm	
	Boom section	6	
	boom shape	U-shaped	
	Max.lifting moment	Base boom	8800 kN·m
		Full-extend boom	3640 kN·m
		Full-extend boom+jib	884 kN·m
	Boom length	Base boom	15.65 m
		Full-extend boom	73 m
		Full-extend boom+jib	115 m
Outrigger span (Longitudinal×Transversal)	8.95 × 8.6 m		
Jib offset	0°\20°\40°		
Working speed	Max.single rope lifting speed of main winch (no load)	130 m/min	
	Max.single rope lifting speed of auxiliary winch (no load)	130 m/min	
	Full extension/retraction time of boom	600 / 600 s	
	Full lifting/descending time of boom	65 / 90 s	
	Slewing speed	1.7 r/min	
Air condition	Superstructure	Cooling / Heating	
	Chassis	Cooling / Heating	

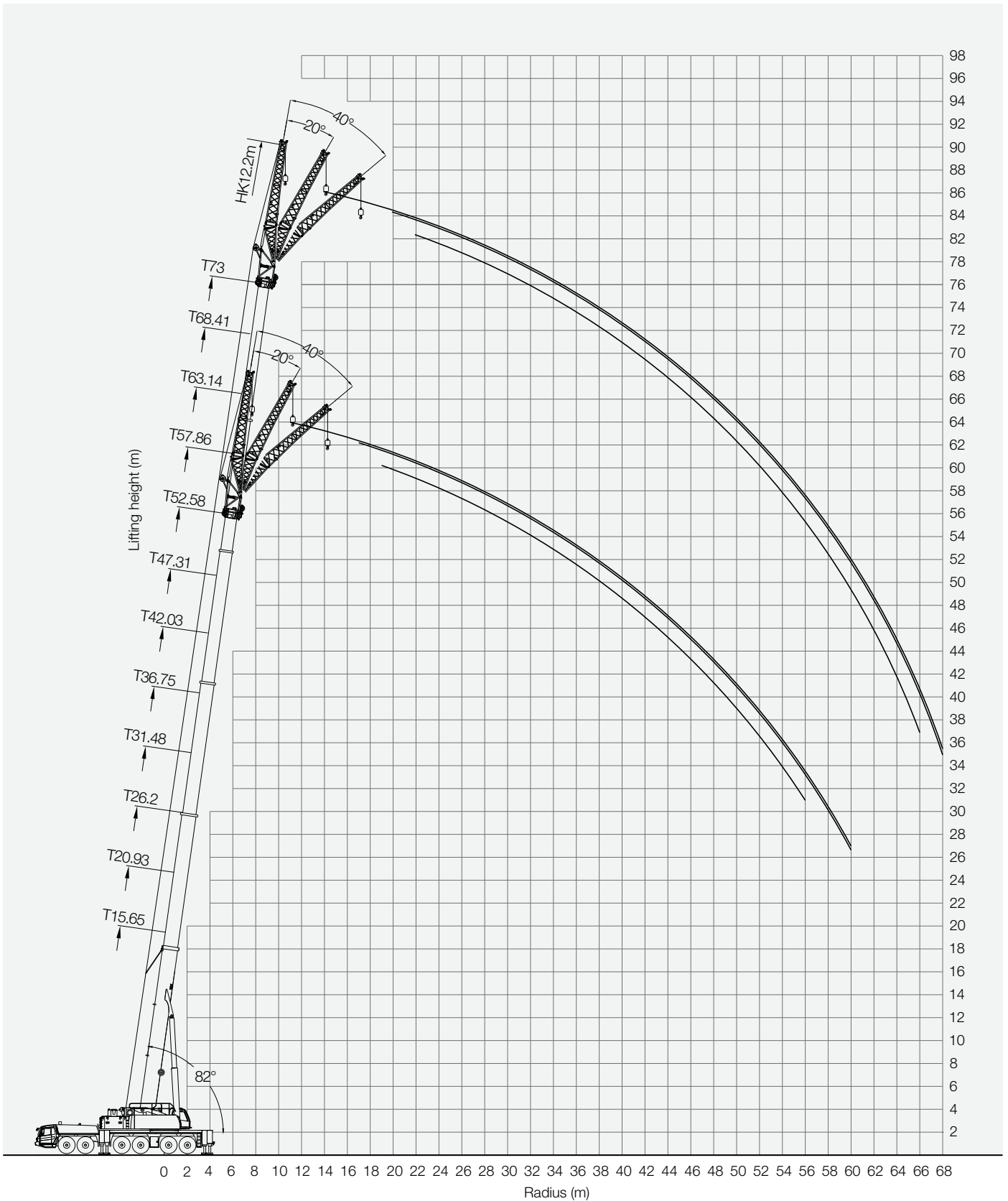


**SAC2600 ALL-TERRAIN CRANE**  
**LOAD CHART**
**Prerequisites:**

- ① Boom operating conditions: from 15.65m to 73m
- ② The span of outriggers is 8.95m×8.6m
- ③ 360° rotation is applied
- ④ Counterweight is 100T

Radius (m)	Main Boom (m)												Radius (m)	
	15.65	20.93	26.2	31.48	36.75	42.03	47.31	52.58	57.86	63.14	68.41	73		
3	260*													3
3.5	202*	153												3.5
4	185	150	138											4
4.5	171	145	132											4.5
5	164	140	128	118										5
6	140	135	122	110	92									6
7	125	118	115	105	88	70								7
8	110	110	110	95	82	68	55							8
9	97	95	95	87	77	66	52	48						9
10	88	87	85	80	72	64	50	47	40					10
11	80	78	75	75	70	60	48	45	38					11
12	67	70	70	70	68	58	46	43	36	27				12
14		60	60	65	60	55	43	37.5	34	26	21	17.5		14
16		50	52	55	50	50	39	34.5	32	24.5	20	17		16
18		42	45	45	45	45	36	32	28	23	19	16.5		18
20			39	40	40	40	33	29	25	22	18	16		20
22			33	36	35	35	30	25	23	19	17	15.5		22
24				32	32	30	26	24	21	18	16	15		24
26				26	29	28	25	22	19	16.5	14.5	14		26
28				21	26	25	23	20.5	17	15.5	13.5	13		28
30					24	23	20	18.5	16	14.5	12.5	12		30
32					22	21	18	17	15	13	11.5	10.5		32
34						19	17.5	16	13.5	12.5	10.5	10		34
36							17.5	17	15	13	12	10	9.5	36
38							15	16.5	13	12	11	9.5	8.5	38
40								15.5	12	11	10.5	9	8	40
42								14.5	11	10.5	9.5	8.5	7.5	42
44								8	10.6	10	9	8	7	44
46									10	9	8.5	7.5	6.5	46
48									9	8.5	8	7	6	48
50										8	7.5	6.5	5.5	50
52										7.5	7	6	5.2	52
54										7	6.5	5.6	5	54
56											6	5.2	4.8	56
58											4	5	4.5	58
60												4.5	4	60
62												4	3.8	62
64												3	3.6	64
66													3.2	66
Parts of line	16	16	16	16	13	10	6	5	4	3	2	2	2	Parts of line
Telescopic Condition (%)														
1	0	0	0	0	0	0	0	0	0	0	0	0	0	1
2	0	46	46	46	46	46	92	92	92	92	92	92	100	2
3	0	0	46	46	46	46	46	46	92	92	92	92	100	3
4	0	0	0	46	46	46	46	46	46	92	92	92	100	4
5	0	0	0	0	46	46	46	46	46	46	92	92	100	5
6	0	0	0	0	0	46	46	46	46	46	46	92	100	6

Notes: The item with \* should be operated at rear side with additional equipment.





**SAC2600 ALL-TERRAIN CRANE**  
**LOAD CHART**
**Prerequisites:**

- ① Jib Length:12.2m
- ② The span of outriggers is 8.95m×8.6m
- ③ 360°rotation is applied
- ④ Counterweight is 100T
- ⑤ Jib offset is 0°

Radius (m)	Main Boom (m)										Radius (m)	
	36.8	42.0	47.3	52.6	57.9	57.9	63.1	63.1	68.4	73.0		
5												5
6												6
7												7
8												8
9	20.1											9
10	20.1	20.1										10
11	20.1	20.1	18.2									11
12	19.3	19.1	18.0	17.0	17.0							12
14	16.6	17.7	16.8	16.8	16.6	15.6	15.1	14.4				14
16	14.9	16.3	15.6	15.7	16.3	15.1	14.9	14.3	12.8			16
18	13.5	14.1	14.4	14.4	15.6	14.2	14.6	13.8	12.6	11.0		18
20	12.3	12.9	13.3	13.5	15.0	13.3	14.2	13.1	12.5	10.9		20
22	11.3	12.0	12.2	12.5	14.2	12.5	13.7	12.4	12	10.6		22
24	10.5	11.1	11.3	11.6	13.2	11.7	13	11.7	11.4	10.1		24
26	9.6	10.4	10.5	10.9	12.4	10.9	12.3	11.1	10.8	9.5		26
28	8.9	9.6	9.8	10.3	11.6	10.3	11.6	10.5	10.4	9.1		28
30	8.4	9.0	9.1	9.6	10.4	9.7	10.9	9.9	9.8	8.7		30
32	7.8	8.5	8.1	9.0	10.2	9.0	10.4	9.3	9.3	8.2		32
34	7.3	8.0	8.0	8.6	9.1	8.5	9.8	8.8	8.8	7.7		34
36	6.9	7.6	7.5	8.1	8.7	8.0	9.2	8.3	8.5	7.4		36
38	6.4	7.1	6.8	7.6	8.1	7.5	8.7	7.9	8	7.0		38
40	6.1	6.8	6.7	7.2	7.7	7.0	8.4	7.5	7.6	6.7		40
42	6.0	6.5	6.3	6.8	7.2	6.7	7.9	7.0	7.2	6.3		42
42	5.2	6.2	6.0	6.5	6.9	6.3	7.3	6.7	6.9	6.0		42
46	4.5	5.8	5.6	6.2	6.8	6.0	6.7	6.4	6.6	5.7		46
48		5.5	5.3	5.9	6.5	5.6	6.1	6.1	6.3	5.4		48
50		4.5	5.0	5.6	6.1	5.3	5.5	5.7	5.7	5.1		50
52			4.5	5.4	5.6	5.0	5.0	5.4	5.2	4.9		52
54			3.8	5.0	5.1	4.8	4.6	5.2	4.8	4.7		54
56			3.0	4.5	4.6	4.5	4.2	4.9	4.4	4.3		56
58				4.0	4.2	4.1	3.8	4.5	4.0	3.9		58
60				3.2	3.4	3.3	3.2	4.0	3.6	3.5		60
62					3.0	2.9	2.8	3.6	3.2	3.1		62
64						2.5	2.4	3.0	3.0	2.9		64
66								2.2	2.5	2.6		66
68										2.3		68
70												70
72												72
74												74
76												76
78												78
80												80
n	2	2	2	2	2	2	2	2	2	1		n
1	0+	0+	0+	0+	92+	0+	92+	46+	92+	100+		1
2	0+	0+	0+	46+	92+	92+	92+	92+	92+	100+		2
3	0+	46+	92+	92+	92+	92+	92+	92+	92+	100+		3
4	92+	92+	92+	92+	46+	92+	92+	92+	92+	100+		4
5	92+	92+	92+	92+	46+	92+	46+	92+	92+	100+		5
m/s	9.0	9.0	9.0	9.0	9.0	9.0	9.0	9.0	9.0	9.0		m/s

**Prerequisites:**

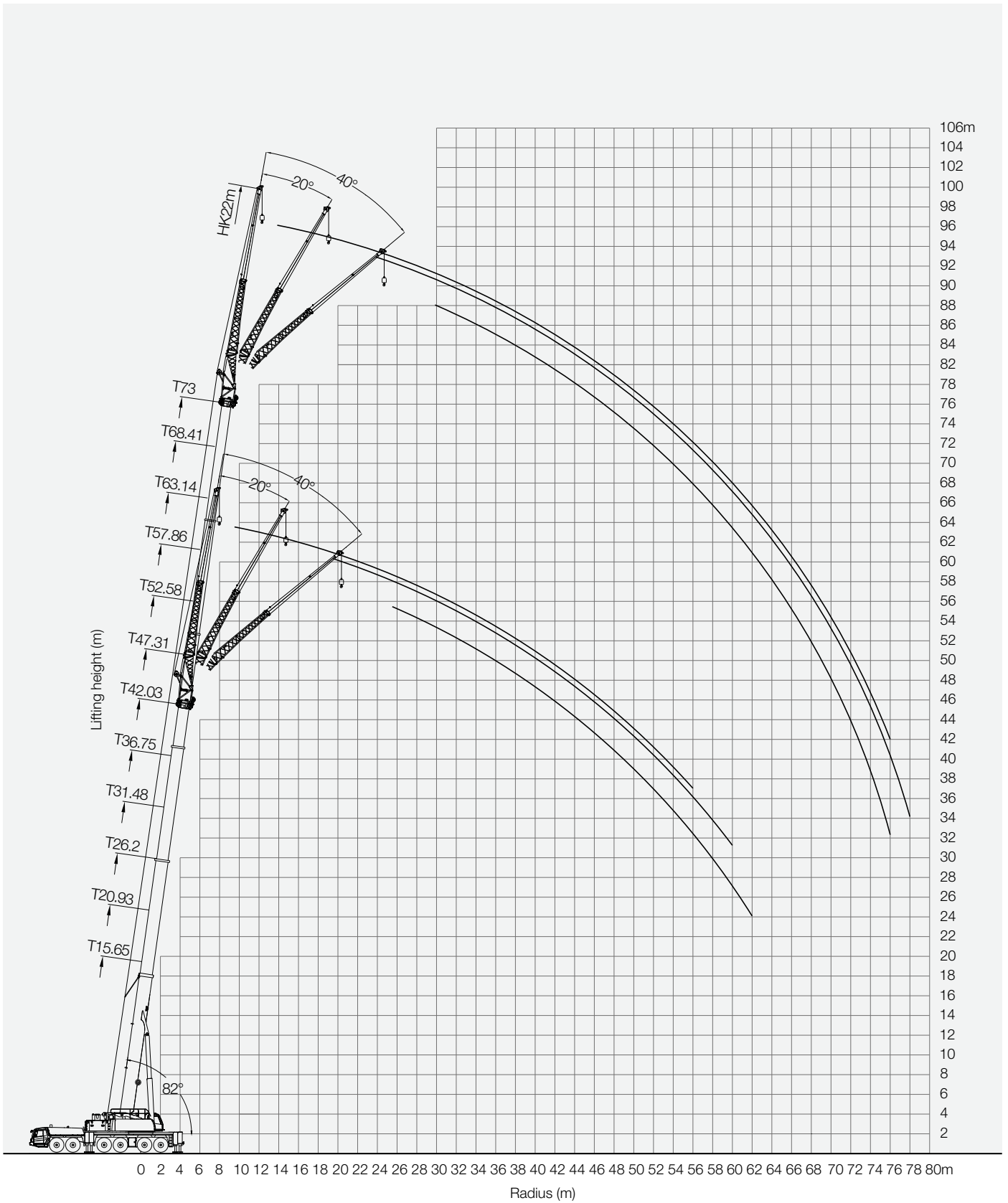
- ① Jib Length:12.2m
- ② The span of outriggers is 8.95m×8.6m
- ③ 360°rotation is applied
- ④ Counterweight is 100T
- ⑤ Jib offset is 20°

Radius (m)	Main Boom (m)										Radius (m)	
	36.8	42.0	47.3	52.6	57.9	57.9	63.1	63.1	68.4	73.0		
7												7
8												8
9												9
10												10
11												11
12												12
14	12.1	12.3										14
16	11.4	11.5	11.6									16
18	10.7	10.9	11.1	11.5								18
20	10.1	10.5	10.5	11.0	11.1	11.2	11.3	10.9				20
22	9.6	9.9	10.2	10.3	10.6	10.7	10.9	10.5	10.5			22
24	9.2	9.5	9.7	9.9	10.4	10.5	10.5	10.2	10.2			24
26	8.7	9.1	9.3	9.6	9.9	10	10.1	9.8	9.8	9.1		26
28	8.5	8.7	8.8	9.1	9.6	9.7	9.7	9.4	9.4	8.8		28
30	8.1	8.4	8.4	8.7	9.3	9.4	9.5	9.0	9	8.5		30
32	7.7	8.1	7.9	8.3	9	9.1	9.1	8.6	8.6	8.1		32
34	7.2	7.8	7.5	7.8	8.7	8.8	8.8	8.2	8.2	7.7		34
36	6.8	7.4	7.0	7.5	8.5	8.6	8.5	7.8	7.8	7.3		36
38	6.4	7.0	6.7	7.1	8	8.1	8.1	7.4	7.5	6.9		38
40	6.2	6.8	6.3	6.8	7.7	7.8	7.8	7.0	7.1	6.7		40
42	5.5	6.4	6.0	6.4	7.2	7.3	7.5	6.7	6.9	6.4		42
44	4.8	6.2	5.8	6.1	6.9	7	7.1	6.5	6.7	6.0		44
46	4.0	5.6	5.6	5.9	6.6	6.7	6.7	6.3	6.5	5.7		46
48		5.0	5.2	5.8	6.2	6.3	6.2	6.1	6.3	5.4		48
50		4.2	5.0	5.6	5.9	6	5.8	5.8	6	5.1		50
52			4.4	5.4	5.8	5.9	5.3	5.5	5.5	4.9		52
54			3.5	5.0	5.2	5.3	4.9	5.2	5	4.7		54
56				4.2	4.4	4.5	4.4	5.0	4.6	4.5		56
58				3.5	3.7	3.8	3.9	4.7	4.2	4.1		58
60				2.5	2.7	3.0	3.2	4.0	3.8	3.7		60
62						2.5	2.8	3.5	3.4	3.3		62
64							2.5	2.8	3.0	3.0		64
66									2.5	2.7		66
68									2.0	2.2		68
70												70
72												72
74												74
76												76
78												78
80												80
82												82
n	2	2	2	1	1	1	1	1	1	1	n	n
1	0+	0+	0+	0+	46+	0+	92+	46+	92+	100+	1	1
2	0+	0+	0+	46+	92+	92+	92+	92+	92+	100+	2	2
3	0+	46+	92+	92+	92+	92+	92+	92+	92+	100+	3	3
4	92+	92+	92+	92+	92+	92+	92+	92+	92+	100+	4	4
5	92+	92+	92+	92+	46+	92+	46+	92+	92+	100+	5	5
m/s	9	9	9	9	9	9	9	9	9	9	m/s	m/s

**SAC2600 ALL-TERRAIN CRANE**  
**LOAD CHART**
**Prerequisites:**

- ① Jib Length:12.2m
- ② The span of outriggers is 8.95m×8.6m
- ③ 360°rotation is applied
- ④ Counterweight is 100T
- ⑤ Jib offset is 40°

Radius (m)	Main Boom (m)										Radius (m)	
	36.8	42.0	47.3	52.6	57.9	57.9	63.1	63.1	68.4	73.0		
10												10
12												12
14												14
16												16
18	9.2	9.4										18
20	8.9	9.1	9.2									20
22	8.7	8.8	8.9	8.9	9.1							22
24	8.6	8.7	8.7	8.8	9	8.9						24
26	8.4	8.6	8.7	8.7	8.8	8.7	8.9	8.8				26
28	8.2	8.4	8.4	8.6	8.7	8.7	8.8	8.7	8.7	8.0		28
30	8.1	8.2	8.2	8.4	8.7	8.5	8.7	8.5	8.6	7.7		30
32	7.7	8.0	7.9	8.1	8.5	8.3	8.7	8.2	8.3	7.4		32
34	7.3	7.8	7.5	7.8	8.4	7.9	8.6	8.0	7.9	7.1		34
36	6.9	7.4	7.1	7.5	8.3	7.6	8.3	7.7	7.7	6.9		36
38	6.5	7.1	6.8	7.1	8	7.2	8	7.3	7.3	6.6		38
40	5.5	6.9	6.4	6.8	7.7	6.9	7.8	7.0	7.0	6.2		40
42	5.0	6.5	6.0	6.5	7.3	6.4	7.4	6.7	6.8	6.0		42
44		6.2	5.8	6.2	6.9	6.1	7.1	6.4	6.5	5.7		44
46		5.5	5.6	6.0	6.6	5.8	6.8	6.0	6.2	5.4		46
48		4.8	5.2	5.7	6.2	5.5	6.2	5.8	6.0	5.2		48
50			4.5	5.0	6	5.4	5.7	5.5	5.7	5.2		50
52			4.0	4.5	5.5	5.1	5.1	5.3	5.3	4.9		52
54				3.5	4.5	4.0	4.9	5.3	5.1	4.8		54
56				3.0	4.0	3.5	4.4	5.0	4.7	4.6		56
58					3.5	3.0	4.0	4.5	4.2	4.2		58
60					3.2	2.5	3.5	4.1	3.8	3.8		60
62					2.5		2.8	3.5	3.3	3.3		62
64							2.0	2.8	3.0	3.0		64
66								2.0	2.4	2.5		66
68												68
70												70
72												72
74												74
76												76
78												78
80												80
82												82
84												84
86												86
n	1	1	1	1	1	1	1	1	1	1	n	
1	0+	0+	0+	0+	46+	0+	92+	46+	92+	100+	1	
2	0+	0+	0+	46+	92+	92+	92+	92+	92+	100+	2	
3	0+	46+	92+	92+	92+	92+	92+	92+	92+	100+	3	
4	92+	92+	92+	92+	92+	92+	92+	92+	92+	100+	4	
5	92+	92+	92+	92+	46+	92+	46+	92+	92+	100+	5	
m/s	9	9	9	9	9	9	9	9	9	9	m/s	



**SAC2600 ALL-TERRAIN CRANE**  
**LOAD CHART**
**Prerequisites:**

- ① Jib Length:22m
- ② The span of outriggers is 8.95m×8.6m
- ③ 360°rotation is applied
- ④ Counterweight is 100T
- ⑤ Jib offset is 0°

Radius (m)	Main Boom (m)										Radius (m)	
	36.8	42.0	47.3	52.6	57.9	57.9	63.1	63.1	68.4	73.0		
5												5
6												6
7												7
8												8
9												9
10	8.5	8.5										10
11	8.3	8.4	8.5									11
12	7.9	8.2	8.0	8.0								12
14	7.8	8.0	7.9	7.7	8.1	7.8	7.7	7.5				14
16	7.5	7.4	7.8	7.6	7.6	7.7	7.7	7.4	6.5			16
18	7.2	7.2	7.6	7.5	7.5	7.6	7.6	7.4	6.5	5.8		18
20	7.0	6.9	7.5	7.4	7.4	7.0	7.4	7.3	6.4	5.8		20
22	6.8	6.8	7.0	7.2	7.2	6.9	6.9	7.2	6.3	5.8		22
24	6.5	6.6	6.5	6.9	7.0	6.7	6.8	7.0	6.2	5.7		24
26	6.2	6.3	6.2	6.7	6.8	6.1	6.6	6.8	6.1	5.7		26
28	6.0	6.0	6.0	6.5	6.6	6.0	6.5	6.4	5.9	5.6		28
30	5.8	5.9	5.9	6.4	6.2	5.8	5.9	5.7	5.8	5.5		30
32	5.5	5.7	5.7	6.2	6.0	5.7	5.7	5.6	5.7	5.4		32
34	5.3	5.5	5.5	5.9	5.7	5.5	5.6	5.4	5.6	5.3		34
36	5.1	5.2	5.3	5.3	5.5	5.3	5.4	5.3	5.4	5.2		36
38	4.9	5.1	5.1	5.2	5.3	5.2	5.3	5.1	5.3	5.1		38
40	4.7	4.9	5.0	5.1	5.2	5.1	5.1	5.1	5.2	5		40
42	4.5	4.7	4.9	5.0	5.1	5.0	5.1	5.0	5.1	4.9		42
44	4.2	4.5	4.7	4.8	5.0	4.9	5	4.9	5	4.8		44
46	4.1	4.4	4.5	4.7	4.8	4.7	4.8	4.7	4.9	4.7		46
48	3.9	4.2	4.4	4.5	4.7	4.6	4.7	4.6	4.9	4.5		48
50	3.8	4.1	4.2	4.4	4.6	4.4	4.6	4.5	4.8	4.4		50
52	3.6	3.9	4.1	4.2	4.5	4.5	4.5	4.7	4.7	4.2		52
54	3.2	3.8	4.0	4.2	4.4	4.3	4.4	4.5	4.6	4		54
56	2.5	3.5	3.8	4.2	4.2	4.1	4.3	4.3	4.5	3.8		56
58	2.0	3.0	3.7	4.0	4.2	3.9	4.2	4.2	4.3	3.6		58
60		2.4	3.3	3.8	4.2	3.7	3.9	4.0	4.0	3.4		60
62		2.0	3.0	3.7	4.0	3.5	3.5	3.8	3.6	3.3		62
64			2.5	3.0	3.7	3.3	3.2	3.6	3.3	3.1		64
66			2.0	2.5	3.5	3.0	2.9	3.5	3.0	2.9		66
68				2.0	3.0	2.5	2.7	3.2	2.8	2.6		68
70					2.5	2.0	2.4	2.5	2.5	2.4		70
72							2.0	2.0	2.3	2.1		72
74									2.0	1.9		74
76										1.7		76
78												78
80												80
82												82
84												84
86												86
n	1.0	1.0	1.0	1.0	1.0	1.0	1.0	1.0	1.0	1.0		n
1	0+	0+	0+	0+	92+	0+	92+	46+	92+	100+		1
2	0+	0+	0+	46+	92+	92+	92+	92+	92+	100+		2
3	0+	46+	92+	92+	92+	92+	92+	92+	92+	100+		3
4	92+	92+	92+	92+	46+	92+	92+	92+	92+	100+		4
5	92+	92+	92+	92+	46+	92+	46+	92+	92+	100+		5
m/s	9.0	9.0	9.0	9.0	9.0	9.0	9.0	9.0	9.0	9.0		m/s



**Prerequisites:**

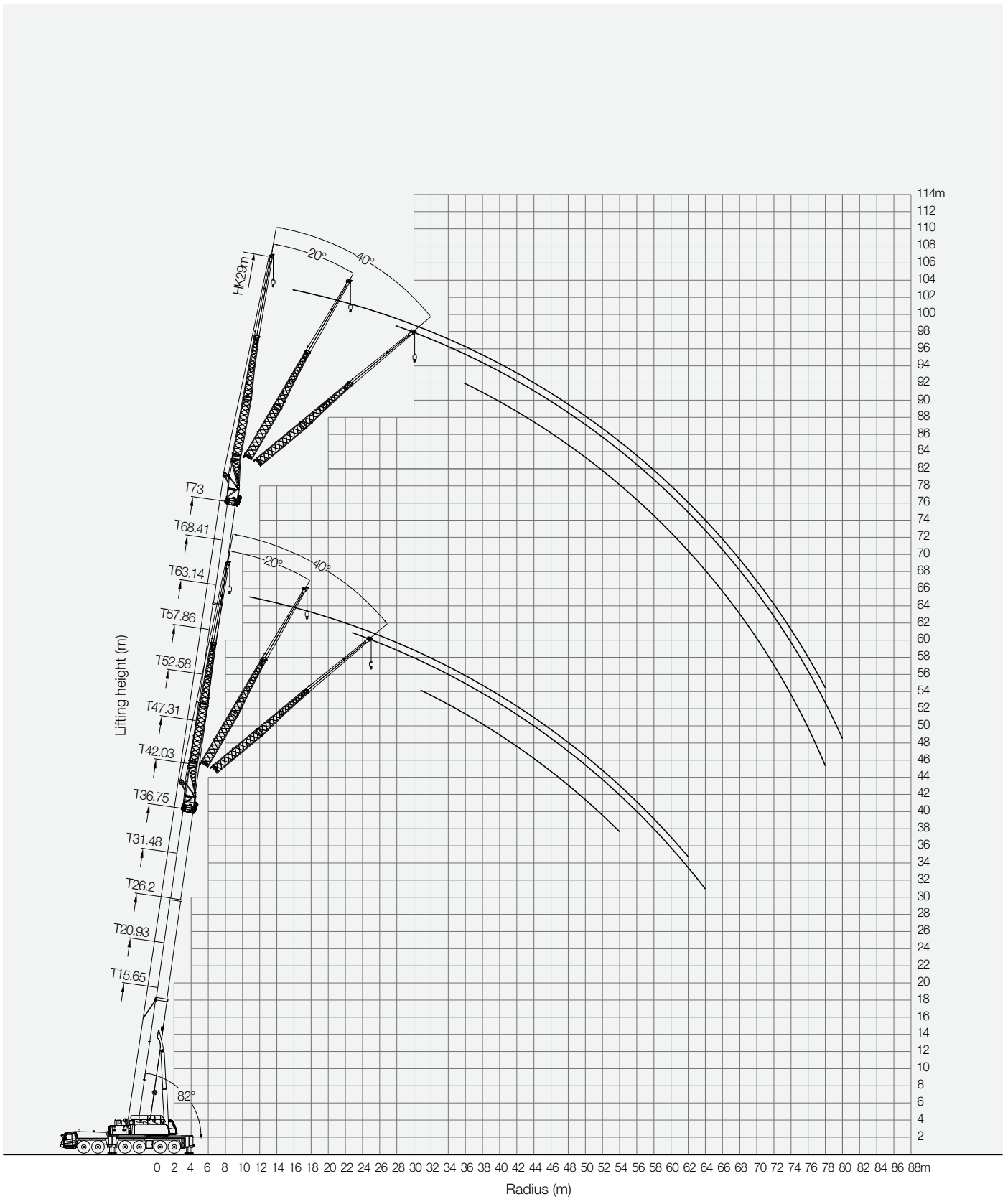
- ① Jib Length:22m
- ② The span of outriggers is 8.95m×8.6m
- ③ 360°rotation is applied
- ④ Counterweight is 100T
- ⑤ Jib offset is 20°

Radius (m)	Main Boom (m)										Radius (m)	
	36.8	42.0	47.3	52.6	57.9	57.9	63.1	63.1	68.4	73.0		
12												12
14												14
16												16
18												18
20	5.9											20
22	5.7	5.7	5.6									22
24	5.5	5.5	5.5	5.4	5.5	5.5						24
26	5.3	5.3	5.3	5.3	5.4	5.4	5.4	5.4	5.3			26
28	5.1	5.1	5.2	5.2	5.3	5.3	5.3	5.3	5.2	5		28
30	5.0	5.1	5.1	5.1	5.2	5.2	5.2	5.2	5.1	4.9		30
32	4.8	4.9	4.9	5.0	5.1	5.1	5.1	5.0	5	4.9		32
34	4.7	4.8	4.9	4.9	5	5.0	5	4.9	4.9	4.8		34
36	4.6	4.7	4.8	4.9	4.9	4.9	4.9	4.9	4.9	4.7		36
38	4.5	4.7	4.7	4.8	4.8	4.8	4.9	4.9	4.8	4.7		38
40	4.4	4.6	4.7	4.8	4.8	4.8	4.8	4.8	4.7	4.6		40
42	4.3	4.4	4.6	4.7	4.7	4.7	4.8	4.7	4.6	4.5		42
44	4.3	4.3	4.5	4.6	4.7	4.6	4.7	4.6	4.6	4.5		44
46	4.3	4.3	4.4	4.5	4.6	4.6	4.6	4.6	4.5	4.4		46
48	4.2	4.2	4.3	4.4	4.6	4.5	4.5	4.5	4.5	4.3		48
50	4.0	4.2	4.2	4.4	4.5	4.5	4.5	4.5	4.4	4.2		50
52	3.5	4.2	4.2	4.3	4.4	4.4	4.5	4.4	4.4	4.2		52
54	3.0	4.0	4.1	4.2	4.3	4.3	4.4	4.4	4.3	4.1		54
56		3.5	3.9	4.2	4.2	4.1	4.3	4.3	4.3	3.9		56
58		3.0	3.5	4.0	4.2	4.0	4.3	4.2	4.2	3.7		58
60		2.5	3.2	3.9	4.1	3.8	4.2	4.0	4.1	3.6		60
62			2.6	3.6	4.1	3.6	3.8	3.8	4.0	3.4		62
64			2.0	3.0	3.9	3.4	3.5	3.7	3.6	3.2		64
66				2.4	3.6	3.0	3.1	3.5	3.3	3.1		66
68				2.0	3.2	2.5	2.8	3.4	3.0	3		68
70					2.5	2.0	2.5	2.6	2.7	2.7		70
72					2.0		2.0	2.0	2.4	2.3		72
74							1.6	1.6	2.0	2.1		74
76										1.8		76
78										1.2		78
80												80
82												82
84												84
86												86
88												88
90												90
n	1	1	1	1	1	1	1	1	1	1		n
1	0+	0+	0+	0+	46+	0+	92+	46+	92+	100+		1
2	0+	0+	0+	46+	92+	92+	92+	92+	92+	100+		2
3	0+	46+	92+	92+	92+	92+	92+	92+	92+	100+		3
4	92+	92+	92+	92+	92+	92+	92+	92+	92+	100+		4
5	92+	92+	92+	92+	46+	92+	46+	92+	92+	100+		5
m/s	9	9	9	9	9	9	9	9	9	9		m/s

**SAC2600 ALL-TERRAIN CRANE**  
**LOAD CHART**
**Prerequisites:**

- ① Jib Length:22m
- ② The span of outriggers is 8.95m×8.6m
- ③ 360°rotation is applied
- ④ Counterweight is 100T
- ⑤ Jib offset is 40°

Radius (m)	Main Boom (m)										Radius (m)	
	36.8	42.0	47.3	52.6	57.9	57.9	63.1	63.1	68.4	73.0		
18												18
20												20
22												22
24												24
26	4.6											26
28	4.5	4.5	4.4	4.4	4.3	4.3						28
30	4.4	4.4	4.4	4.3	4.3	4.3						30
32	4.3	4.3	4.3	4.3	4.3	4.3	4.3	4.2	4.2			32
34	4.3	4.3	4.3	4.3	4.3	4.2	4.2	4.2	4.2	4.2	4.2	34
36	4.3	4.2	4.2	4.2	4.2	4.2	4.2	4.2	4.2	4.2	4.1	36
38	4.3	4.2	4.2	4.2	4.2	4.2	4.2	4.2	4.2	4.2	4.1	38
40	4.3	4.2	4.2	4.2	4.2	4.2	4.2	4.2	4.2	4.2	4.1	40
42	4.3	4.2	4.2	4.2	4.2	4.2	4.2	4.2	4.2	4.1	4.1	42
44	4.3	4.2	4.2	4.2	4.2	4.2	4.2	4.2	4.2	4.1	4.1	44
46	4.3	4.2	4.2	4.2	4.2	4.2	4.2	4.2	4.2	4.1	4.1	46
48	4.0	4.2	4.2	4.2	4.2	4.2	4.2	4.2	4.2	4.1	4.1	48
50	3.8	4.2	4.2	4.2	4.2	4.2	4.2	4.2	4.2	4.1	4.0	50
52	3.5	4.0	4.2	4.2	4.2	4.2	4.2	4.2	4.2	4.1	4.0	52
54		3.8	4.0	4.2	4.2	4.2	4.2	4.2	4.2	4.1	3.9	54
56		3.2	3.8	4.1	4.2	4.0	4.2	4.2	4.2	4.1	3.8	56
58			3.5	4.0	4.2	3.8	4.2	4.1	4.1	4.1	3.7	58
60			3.0	3.8	4.2	3.8	4.2	3.9	4.1	4.1	3.7	60
62			2.5	3.2	4.0	3.5	3.7	3.7	3.9	3.9	3.5	62
64				2.5	3.8	3.2	3.5	3.7	3.8	3.8	3.3	64
66				2.0	3.5	2.8	3.0	3.5	3.3	3.3	3.2	66
68					3.0	2.2	2.8	3.1	3.0	3.0	3.0	68
70							2.0	2.5	2.7	2.7	2.7	70
72								2.0	2.3	2.3	2.3	72
74									1.8	2	2	74
76										1.5	1.5	76
78												78
80												80
82												82
84												84
n	1	1	1	1	1	1	1	1	1	1	1	n
1	0+	0+	0+	0+	46+	0+	92+	46+	92+	100+	100+	1
2	0+	0+	0+	46+	92+	92+	92+	92+	92+	100+	100+	2
3	0+	46+	92+	92+	92+	92+	92+	92+	92+	100+	100+	3
4	92+	92+	92+	92+	92+	92+	92+	92+	92+	100+	100+	4
5	92+	92+	92+	92+	46+	92+	46+	92+	92+	100+	100+	5
m/s	9	9	9	9	9	9	9	9	9	9	9	m/s



**SAC2600 ALL-TERRAIN CRANE  
LOAD CHART**
**Prerequisites:**

- ① Jib Length:29m
- ② The span of outriggers is 8.95m×8.6m
- ③ 360°rotation is applied
- ④ Counterweight is 100T
- ⑤ Jib offset is 0°

Radius (m)	Main Boom (m)										Radius (m)	
	36.8	42.0	47.3	52.6	57.9	57.9	63.1	63.1	68.4	73.0		
6												6
7												7
8												8
9												9
10												10
11	6.0											11
12	6.0	5.8										12
14	6.0	5.7	5.6	5.6	5.6							14
16	5.9	5.6	5.4	5.5	5.6	5.3	5.3					16
18	5.7	5.6	5.4	5.4	5.5	5.3	5.3	5.0	4.8			18
20	5.5	5.4	5.2	5.4	5.4	5.2	5.2	5.0	4.8	4.3		20
22	5.2	5.2	5.1	5.1	5.2	4.9	5.1	4.9	4.7	4.3		22
24	5.1	5.1	5.0	4.9	5.0	4.9	5.0	4.9	4.7	4.3		24
26	4.8	4.8	4.8	4.7	4.8	4.9	4.9	4.7	4.6	4.2		26
28	4.5	4.6	4.6	4.5	4.6	4.7	4.8	4.6	4.4	4.1		28
30	4.3	4.4	4.4	4.4	4.5	4.6	4.7	4.5	4.3	4.1		30
32	4.2	4.2	4.2	4.2	4.3	4.4	4.5	4.3	4.2	4.0		32
34	4.0	4.0	4.1	4.3	4.4	4.3	4.4	4.2	4.1	3.9		34
36	3.8	3.9	4.1	4.2	4.3	4.1	4.2	4.1	4.0	3.8		36
38	3.6	3.7	3.9	4.0	4.1	4.0	4.1	4.0	3.9	3.7		38
40	3.4	3.5	3.8	3.8	4.0	3.9	4.0	3.8	3.8	3.6		40
42	3.3	3.3	3.6	3.7	3.8	3.7	3.8	3.7	3.7	3.5		42
44	3.1	3.3	3.5	3.6	3.7	3.6	3.7	3.6	3.6	3.4		44
46	2.9	3.1	3.3	3.4	3.6	3.5	3.6	3.5	3.4	3.3		46
48	2.7	3.0	3.1	3.3	3.5	3.4	3.5	3.4	3.3	3.2		48
50	2.6	2.8	3.0	3.2	3.3	3.2	3.3	3.3	3.2	3.2		50
52	2.5	2.7	3.0	3.0	3.2	3.1	3.2	3.2	3.2	3.1		52
54	2.5	2.7	2.9	2.9	3.1	3.0	3.1	3.1	3.1	3.0		54
56	2.4	2.6	2.8	2.9	3.0	3.0	3.0	3.0	3.0	3.0		56
58	2.2	2.5	2.7	2.8	3.0	2.9	3.0	3.0	3.0	2.9		58
60	2.0	2.4	2.4	2.7	2.9	2.8	3.0	2.9	2.9	2.9		60
62	1.6	2.0	2.5	2.6	2.8	2.7	2.9	2.8	2.9	2.8		62
64	1.2	1.5	2.4	2.5	2.7	2.7	2.8	2.8	2.8	2.7		64
66			2.2	2.5	2.6	2.6	2.7	2.7	2.7	2.6		66
68			1.9	2.4	2.5	2.5	2.6	2.6	2.7	2.5		68
70			1.5	2.2	2.5	2.4	2.5	2.5	2.5	2.4		70
72				1.8	2.4	2.4	2.2	2.5	2.3	2.2		72
74				1.5	2.0	2.2	2.0	2.4	2.1	1.9		74
76					1.5	1.8	1.7	2.2	1.8	1.7		76
78						1.5	1.5	1.8	1.6	1.5		78
80						1.0	1.2	1.5	1.4	1.3		80
82								1.0	1.0	1.1		82
84												84
86												86
88												88
90												90
92												92
94												94
96												96
98												98
100												100
n	1.0	1.0	1.0	1.0	1.0	1.0	1.0	1.0	1.0	1.0	n	n
1	0+	0+	0+	0+	92+	0+	92+	46+	92+	100+	1	1
2	0+	0+	0+	46+	92+	92+	92+	92+	92+	100+	2	2
3	0+	46+	92+	92+	92+	92+	92+	92+	92+	100+	3	3
4	92+	92+	92+	92+	46+	92+	92+	92+	92+	100+	4	4
5	92+	92+	92+	92+	46+	92+	46+	92+	92+	100+	5	5
m/s	9.0	9.0	9.0	9.0	9.0	9.0	9.0	9.0	9.0	9.0	m/s	m/s

**Prerequisites:**

- ① Jib Length:29m
- ② The span of outriggers is 8.95m×8.6m
- ③ 360°rotation is applied
- ④ Counterweight is 100T
- ⑤ Jib offset is 20°

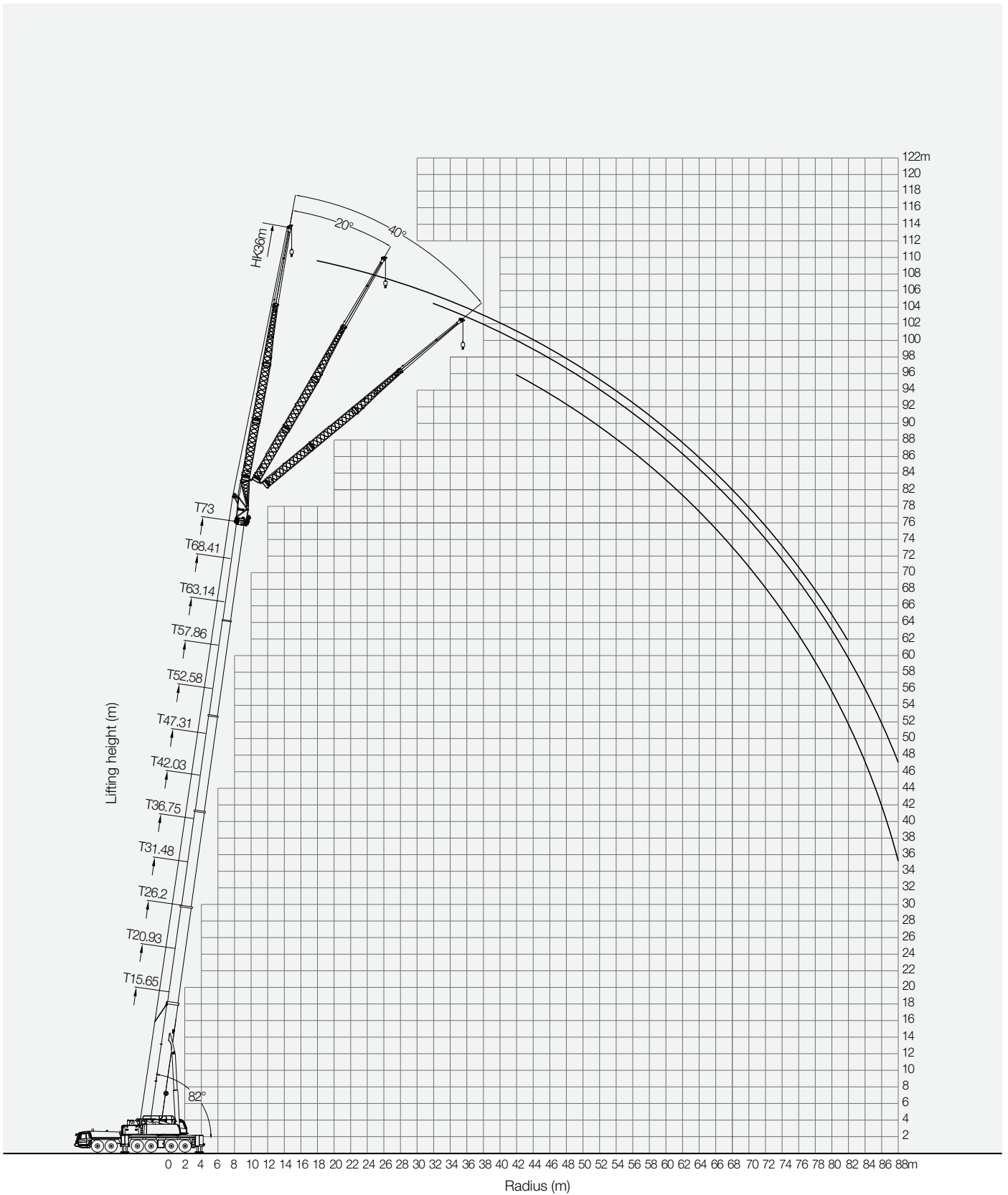
Radius (m)	Main Boom (m)										Radius (m)	
	36.8	42.0	47.3	52.6	57.9	57.9	63.1	63.1	68.4	73.0		
14												14
16												16
18												18
20												20
22												22
24	4.2											24
26	4.0	4.0	4.0									26
28	3.8	3.8	3.8	3.8	3.9	3.8						28
30	3.6	3.6	3.7	3.7	3.8	3.7	3.7	3.5	3.5			30
32	3.5	3.5	3.6	3.6	3.6	3.5	3.6	3.5	3.4	3.2		32
34	3.4	3.4	3.4	3.4	3.5	3.4	3.5	3.4	3.3	3.2		34
36	3.3	3.3	3.3	3.3	3.4	3.3	3.4	3.3	3.2	3.1		36
38	3.1	3.1	3.2	3.2	3.3	3.2	3.3	3.2	3.2	3.1		38
40	3.0	3.0	3.1	3.1	3.2	3.1	3.2	3.1	3.1	3.0		40
42	2.9	2.9	3.0	3.0	3.1	3.0	3.1	3.0	3.0	3.0		42
44	2.9	2.9	3.0	3.0	3.0	3.0	3.0	3.0	3.0	3.0		44
46	2.8	2.8	2.9	3.0	3.0	3.0	3.0	3.0	3.0	2.9		46
48	2.7	2.7	2.9	2.9	3.0	2.9	3.0	2.9	2.9	2.8		48
50	2.6	2.6	2.8	2.8	2.9	2.8	2.9	2.9	2.8	2.8		50
52	2.6	2.6	2.7	2.8	2.8	2.8	2.8	2.8	2.8	2.7		52
54	2.6	2.6	2.7	2.7	2.8	2.7	2.8	2.7	2.7	2.7		54
56	2.4	2.6	2.6	2.7	2.7	2.7	2.7	2.7	2.7	2.6		56
58	2.0	2.4	2.6	2.7	2.7	2.6	2.7	2.7	2.6	2.6		58
60		2.0	2.6	2.6	2.6	2.6	2.6	2.6	2.6	2.6		60
62			2.5	2.6	2.6	2.6	2.6	2.5	2.6	2.5		62
64			2.2	2.5	2.6	2.5	2.5	2.5	2.5	2.5		64
66			2.0	2.5	2.5	2.5	2.5	2.5	2.5	2.5		66
68			1.6	2.5	2.5	2.5	2.5	2.5	2.5	2.5		68
70				2.1	2.5	2.5	2.5	2.5	2.5	2.4		70
72				1.8	2.2	2.3	2.5	2.5	2.5	2.3		72
74				1.4	1.8	2.0	2.2	2.5	2.3	2.2		74
76					1.4	1.6	2.0	2.2	2.1	2.0		76
78					1.0	1.2	1.6	2.0	1.9	1.8		78
80							1.2	1.6	1.6	1.5		80
82								1.2	1.2	1.3		82
84										1		84
86												86
88												88
90												90
92												92
94												94
96												96
98												98
100												100
102												102
104												104
n	1	1	1	1	1	1	1	1	1	1	n	n
1	0+	0+	0+	0+	46+	0+	92+	46+	92+	100+	1	1
2	0+	0+	0+	46+	92+	92+	92+	92+	92+	100+	2	2
3	0+	46+	92+	92+	92+	92+	92+	92+	92+	100+	3	3
4	92+	92+	92+	92+	92+	92+	92+	92+	92+	100+	4	4
5	92+	92+	92+	92+	46+	92+	46+	92+	92+	100+	5	5
m/s	9	9	9	9	9	9	9	9	9	9	m/s	m/s



**SAC2600 ALL-TERRAIN CRANE**  
**LOAD CHART**
**Prerequisites:**

- ① Jib Length:29m
- ② The span of outriggers is 8.95m×8.6m
- ③ 360°rotation is applied
- ④ Counterweight is 100T
- ⑤ Jib offset is 40°

Radius (m)	Main Boom (m)										Radius (m)	
	36.8	42.0	47.3	52.6	57.9	57.9	63.1	63.1	68.4	73.0		
24												24
26												26
28												28
30												30
32	2.8	2.8										32
34	2.7	2.7	2.7									34
36	2.7	2.7	2.7	2.6	2.7	2.6	2.6					36
38	2.6	2.6	2.6	2.6	2.6	2.6	2.6	2.5	2.7			38
40	2.6	2.6	2.6	2.6	2.6	2.5	2.5	2.5	2.5	2.6		40
42	2.5	2.5	2.5	2.5	2.5	2.5	2.5	2.5	2.5	2.6		42
44	2.5	2.5	2.5	2.5	2.5	2.5	2.5	2.4	2.4	2.4		44
46	2.5	2.5	2.5	2.5	2.4	2.4	2.4	2.4	2.4	2.5		46
48	2.5	2.5	2.4	2.4	2.4	2.4	2.4	2.4	2.4	2.4		48
50	2.5	2.5	2.4	2.4	2.4	2.4	2.4	2.4	2.4	2.4		50
52	2.5	2.5	2.4	2.4	2.4	2.4	2.4	2.4	2.4	2.4		52
54	2.3	2.5	2.4	2.4	2.4	2.4	2.4	2.4	2.4	2.4		54
56	2.0	2.5	2.4	2.4	2.4	2.4	2.4	2.4	2.4	2.4		56
58	1.5	2.4	2.4	2.4	2.4	2.4	2.4	2.4	2.4	2.4		58
60		2.0	2.4	2.4	2.4	2.4	2.4	2.4	2.4	2.4		60
62		1.5	2.3	2.4	2.4	2.4	2.4	2.4	2.4	2.4		62
64			2.0	2.4	2.4	2.4	2.4	2.4	2.4	2.4		64
66			1.6	2.3	2.4	2.4	2.4	2.4	2.4	2.4		66
68			1.0	2.0	2.3	2.3	2.4	2.4	2.4	2.4		68
70				1.6	2.0	2.0	2.4	2.4	2.4	2.4		70
72				1.0	1.8	1.8	2.4	2.4	2.4	2.4		72
74					1.2	1.4	2.3	2.3	2.3	2.3		74
76						1.0	2.0	2.0	2.1	2.1		76
78							1.5	1.5	2.0	1.8		78
80							1.0	1.0	1.5	1.5		80
82									1.0	1.0		82
84												84
86												86
88												88
90												90
n	1	1	1	1	1	1	1	1	1	1	1	n
1	0+	0+	0+	0+	46+	0+	92+	46+	92+	100+		1
2	0+	0+	0+	46+	92+	92+	92+	92+	92+	100+		2
3	0+	46+	92+	92+	92+	92+	92+	92+	92+	100+		3
4	92+	92+	92+	92+	92+	92+	92+	92+	92+	100+		4
5	92+	92+	92+	92+	46+	92+	46+	92+	92+	100+		5
m/s	9	9	9	9	9	9	9	9	9	9	9	m/s



**SAC2600 ALL-TERRAIN CRANE**  
**LOAD CHART**
**Prerequisites:**

- ① Jib Length:36m
- ② The span of outriggers is 8.95m×8.6m
- ③ 360°rotation is applied
- ④ Counterweight is 100T
- ⑤ Jib offset is 0°

Radius (m)	Main Boom (m)										Radius (m)	
	36.8	42.0	47.3	52.6	57.9	57.9	63.1	63.1	68.4	73.0		
7												7
8												8
9												9
10												10
11												11
12	4.3											12
14	4.3	4.2	4.1									14
16	4.2	4.2	4.0	4.0								16
18	4.2	4.1	3.8	4.0	4.0	3.8	3.8	3.6				18
20	4.0	4.0	3.8	3.7	3.8	3.8	3.8	3.6	3.3			20
22	3.9	3.8	3.7	3.6	3.7	3.7	3.7	3.5	3.3	3.0		22
24	3.7	3.6	3.5	3.7	3.7	3.6	3.6	3.4	3.3	3.0		24
26	3.5	3.5	3.4	3.5	3.6	3.4	3.5	3.3	3.2	3.0		26
28	3.3	3.3	3.4	3.4	3.5	3.3	3.4	3.2	3.1	2.9		28
30	3.2	3.2	3.3	3.3	3.4	3.2	3.2	3.1	3.0	2.9		30
32	3.0	3.1	3.1	3.1	3.2	3.1	3.1	3.0	3.0	2.8		32
34	2.8	3.0	3.0	3.0	3.1	3.0	3.0	3.0	2.9	2.7		34
36	2.7	2.7	3.0	3.0	3.0	2.9	3.0	2.9	2.8	2.6		36
38	2.5	2.6	2.8	2.9	2.9	2.8	2.9	2.8	2.7	2.6		38
40	2.4	2.5	2.7	2.7	2.8	2.7	2.8	2.7	2.6	2.5		40
42	2.3	2.4	2.4	2.6	2.7	2.6	2.7	2.6	2.5	2.4		42
44	2.2	2.3	2.4	2.5	2.6	2.5	2.6	2.5	2.5	2.3		44
46	2.1	2.2	2.3	2.4	2.5	2.4	2.5	2.4	2.4	2.3		46
48	2.0	2.1	2.2	2.3	2.4	2.3	2.4	2.3	2.3	2.2		48
50	1.9	2.0	2.1	2.2	2.3	2.2	2.3	2.2	2.2	2.1		50
52	1.7	1.9	2.0	2.1	2.2	2.1	2.2	2.1	2.1	2.1		52
54	1.7	1.8	1.9	2.0	2.1	2.1	2.1	2.1	2.1	2.0		54
56	1.6	1.7	1.8	1.9	2.0	2.0	2.1	2.0	2.0	1.9		56
58	1.5	1.6	1.7	1.8	1.9	1.9	2.0	1.9	1.9	1.9		58
60	1.5	1.5	1.6	1.7	1.8	1.8	1.9	1.9	1.9	1.8		60
62	1.5	1.5	1.6	1.7	1.8	1.8	1.8	1.8	1.8	1.8		62
64	1.5	1.5	1.5	1.6	1.7	1.7	1.8	1.8	1.8	1.8		64
66	1.3	1.5	1.5	1.5	1.6	1.6	1.8	1.7	1.7	1.7		66
68	1.2	1.5	1.5	1.5	1.6	1.5	1.6	1.6	1.7	1.7		68
70		1.3	1.5	1.5	1.5	1.5	1.6	1.6	1.7	1.6		70
72		1.2	1.5	1.5	1.5	1.5	1.5	1.5	1.6	1.6		72
74		1.0	1.3	1.5	1.5	1.5	1.5	1.5	1.6	1.6		74
76			1.2	1.3	1.5	1.5	1.5	1.5	1.5	1.5		76
78			1.0	1.2	1.5	1.4	1.5	1.5	1.5	1.5		78
80				1.0	1.3	1.2	1.4	1.5	1.4	1.3		80
82					1.2	1.1	1.2	1.4	1.2	1.1		82
84					1.0	1.0	1.0	1.2	1.0			84
86								1.0				86
88												88
90												90
92												92
94												94
96												96
98												98
100												100
102												102
n	1.0	1.0	1.0	1.0	1.0	1.0	1.0	1.0	1.0	1.0	n	n
1	0+	0+	0+	0+	92+	0+	92+	46+	92+	100+	1	1
2	0+	0+	0+	46+	92+	92+	92+	92+	92+	100+	2	2
3	0+	46+	92+	92+	92+	92+	92+	92+	92+	100+	3	3
4	92+	92+	92+	92+	46+	92+	92+	92+	92+	100+	4	4
5	92+	92+	92+	92+	46+	92+	46+	92+	92+	100+	5	5
m/s	9.0	9.0	9.0	9.0	9.0	9.0	9.0	9.0	9.0	9.0	m/s	m/s

**Prerequisites:**

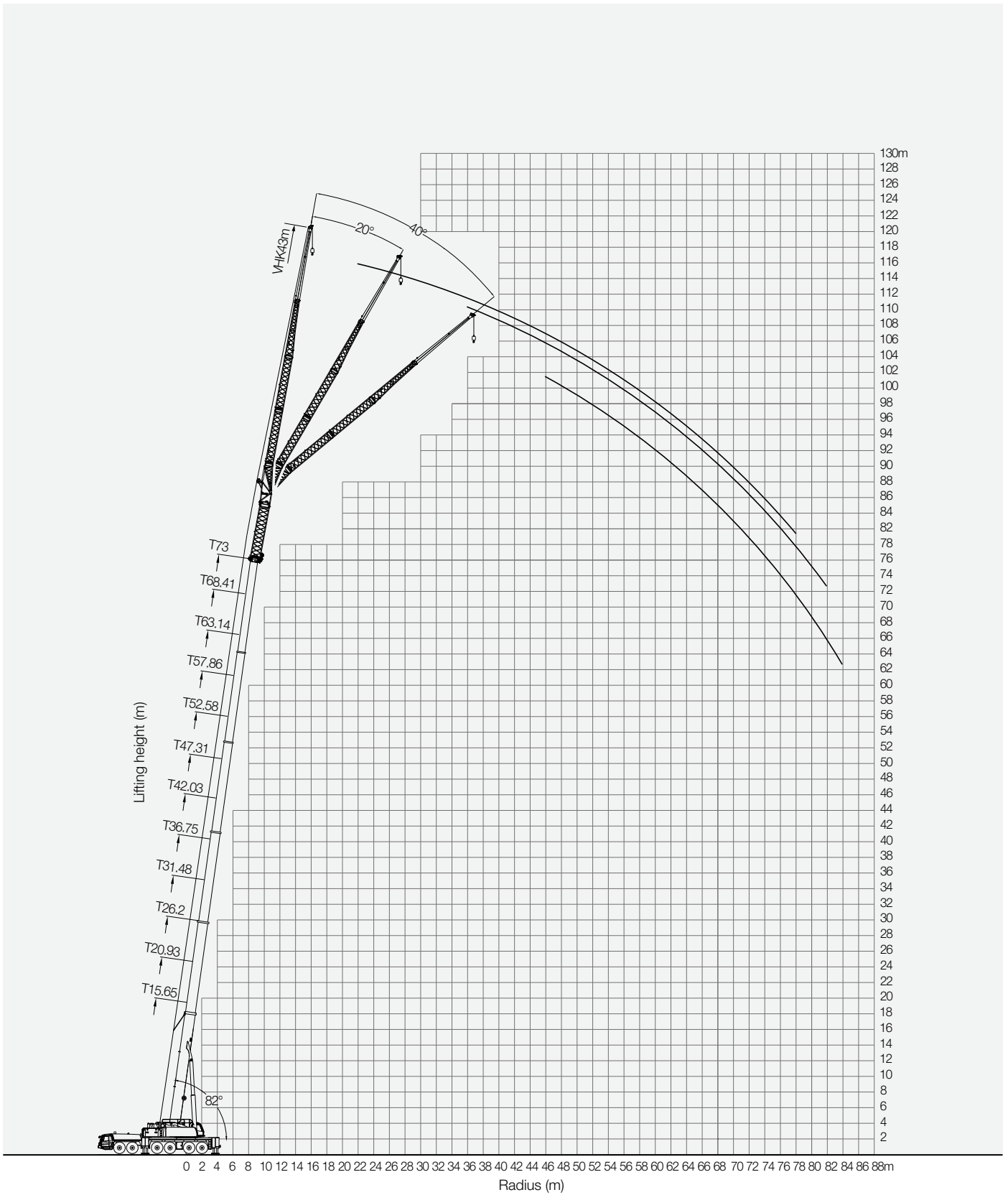
- ① Jib Length:36m
- ② The span of outriggers is 8.95m×8.6m
- ③ 360°rotation is applied
- ④ Counterweight is 100T
- ⑤ Jib offset is 20°

Radius (m)	Main Boom (m)										Radius (m)	
	36.8	42.0	47.3	52.6	57.9	57.9	63.1	63.1	68.4	73.0		
18												18
20												20
22												22
24												24
26												26
28	2.7											28
30	2.6	2.6	2.6									30
32	2.5	2.5	2.5	2.4	2.4	2.3						32
34	2.3	2.4	2.4	2.3	2.3	2.2	2.3	2.2				34
36	2.2	2.3	2.3	2.2	2.3	2.2	2.2	2.2	2.1	2.0		36
38	2.1	2.1	2.2	2.1	2.2	2.1	2.2	2.1	2.1	2.0	2.0	38
40	2.0	2.1	2.1	2.1	2.1	2.1	2.1	2.1	2.0	2.0	2.0	40
42	1.9	2.0	2.0	2.0	2.1	2.0	2.0	2.0	2.0	1.9	1.9	42
44	1.8	1.9	1.9	2.0	2.0	2.0	2.0	2.0	1.9	1.9	1.9	44
46	1.8	1.9	1.9	1.9	1.9	1.9	1.9	1.9	1.9	1.8	1.8	46
48	1.7	1.8	1.8	1.9	1.9	1.8	1.9	1.9	1.8	1.8	1.8	48
50	1.7	1.7	1.8	1.8	1.8	1.8	1.8	1.8	1.8	1.8	1.8	50
52	1.6	1.7	1.7	1.8	1.8	1.8	1.8	1.8	1.7	1.7	1.7	52
54	1.6	1.6	1.7	1.7	1.7	1.7	1.7	1.7	1.7	1.7	1.7	54
56	1.5	1.6	1.6	1.7	1.7	1.7	1.7	1.7	1.7	1.6	1.6	56
58	1.5	1.6	1.6	1.6	1.7	1.6	1.7	1.6	1.6	1.6	1.6	58
60	1.5	1.5	1.5	1.6	1.6	1.6	1.6	1.6	1.6	1.6	1.6	60
62	1.5	1.5	1.5	1.5	1.6	1.6	1.6	1.6	1.6	1.6	1.6	62
64	1.3	1.5	1.5	1.5	1.6	1.5	1.6	1.6	1.6	1.5	1.5	64
66	1.2	1.5	1.5	1.5	1.5	1.5	1.5	1.5	1.5	1.5	1.5	66
68		1.3	1.5	1.5	1.5	1.5	1.5	1.5	1.5	1.5	1.5	68
70		1.2	1.5	1.5	1.5	1.5	1.5	1.5	1.5	1.5	1.5	70
72		1.0	1.3	1.5	1.5	1.5	1.5	1.5	1.4	1.5	1.5	72
74			1.2	1.5	1.5	1.5	1.5	1.5	1.4	1.4	1.4	74
76			1.0	1.3	1.5	1.5	1.5	1.5	1.4	1.4	1.4	76
78				1.2	1.5	1.5	1.5	1.5	1.4	1.4	1.4	78
80				1.0	1.3	1.3	1.5	1.5	1.4	1.4	1.4	80
82					1.2	1.2	1.4	1.5	1.4	1.4	1.4	82
84					1.1	1.1	1.2	1.3	1.2	1.2	1.2	84
86					1.0	1.0	1.1	1.2	1.1	1.1	1.1	86
88							1.0	1.1	1.0	1.0	1.0	88
90								1.0				90
92												92
94												94
96												96
n	1	1	1	1	1	1	1	1	1	1	1	n
1	0+	0+	0+	0+	46+	0+	92+	46+	92+	100+	100+	1
2	0+	0+	0+	46+	92+	92+	92+	92+	92+	100+	100+	2
3	0+	46+	92+	92+	92+	92+	92+	92+	92+	100+	100+	3
4	92+	92+	92+	92+	92+	92+	92+	92+	92+	100+	100+	4
5	92+	92+	92+	92+	46+	92+	46+	92+	92+	100+	100+	5
m/s	9	9	9	9	9	9	9	9	9	9	9	m/s

**SAC2600 ALL-TERRAIN CRANE  
LOAD CHART**
**Prerequisites:**

- ① Jib Length:36m
- ② The span of outriggers is 8.95m×8.6m
- ③ 360°rotation is applied
- ④ Counterweight is 100T
- ⑤ Jib offset is 40°

Radius (m)	Main Boom (m)										Radius (m)	
	36.8	42.0	47.3	52.6	57.9	57.9	63.1	63.1	68.4	73.0		
30												30
32												32
34												34
36												36
38	1.7	1.7										38
40	1.6	1.6	1.6									40
42	1.6	1.6	1.6	1.6	1.6	1.6	1.6	1.6				42
44	1.6	1.6	1.6	1.6	1.6	1.6	1.6	1.5	1.5			44
46	1.5	1.5	1.5	1.5	1.5	1.5	1.5	1.5	1.5	1.5	1.5	46
48	1.5	1.5	1.5	1.5	1.5	1.5	1.5	1.5	1.5	1.5	1.5	48
50	1.5	1.5	1.5	1.5	1.5	1.5	1.5	1.5	1.5	1.5	1.5	50
52	1.5	1.5	1.5	1.5	1.5	1.5	1.5	1.5	1.5	1.5	1.5	52
54	1.5	1.5	1.5	1.5	1.5	1.5	1.5	1.5	1.5	1.5	1.5	54
56	1.5	1.5	1.5	1.5	1.5	1.5	1.5	1.5	1.5	1.5	1.5	56
58	1.5	1.5	1.5	1.5	1.5	1.5	1.5	1.5	1.5	1.5	1.5	58
60	1.3	1.5	1.5	1.5	1.5	1.5	1.5	1.5	1.5	1.5	1.5	60
62	1.1	1.5	1.5	1.5	1.5	1.5	1.5	1.5	1.5	1.5	1.5	62
64		1.3	1.5	1.5	1.5	1.5	1.5	1.5	1.5	1.5	1.5	64
66		1.1	1.5	1.5	1.5	1.5	1.5	1.5	1.5	1.5	1.5	66
68			1.3	1.5	1.5	1.5	1.5	1.5	1.5	1.5	1.4	68
70			1.2	1.5	1.5	1.5	1.5	1.5	1.5	1.5	1.4	70
72			1.0	1.3	1.5	1.5	1.5	1.5	1.5	1.5	1.4	72
74				1.2	1.5	1.5	1.5	1.5	1.5	1.5	1.4	74
76				1.0	1.3	1.3	1.5	1.5	1.5	1.5	1.4	76
78					1.2	1.2	1.5	1.5	1.5	1.5	1.4	78
80					1.0	1.0	1.3	1.3	1.5	1.5	1.4	80
82							1.2	1.2	1.5	1.5	1.4	82
84							1.0	1.0	1.3	1.3	1.2	84
86									1.2	1.2	1.1	86
88									1.0	1.0	1.0	88
90												90
92												92
94												94
96												96
98												98
100												100
n	1	1	1	1	1	1	1	1	1	1	1	n
1	0+	0+	0+	0+	46+	0+	92+	46+	92+	100+	100+	1
2	0+	0+	0+	46+	92+	92+	92+	92+	92+	100+	100+	2
3	0+	46+	92+	92+	92+	92+	92+	92+	92+	100+	100+	3
4	92+	92+	92+	92+	92+	92+	92+	92+	92+	100+	100+	4
5	92+	92+	92+	92+	46+	92+	46+	92+	92+	100+	100+	5
m/s	9	9	9	9	9	9	9	9	9	9	9	m/s



**SAC2600 ALL-TERRAIN CRANE**  
**LOAD CHART**
**Prerequisites:**

- ① Jib Length:43m
- ② The span of outriggers is 8.95m×8.6m
- ③ 360°rotation is applied
- ④ Counterweight is 100T
- ⑤ Jib offset is 0°

Radius (m)	Main boom (m) + Extension										Radius (m)	
	36.8	42	47.3	52.6	57.9	57.9	63.1	63.1	68.4	72		
9												9
10												10
11	3.6											11
12	3.6	3.4										12
14	3.6	3.4	3.1	3								14
16	3.6	3.4	3.1	3	2.8	2.7	2.4	2.3				16
18	3.6	3.4	3.1	3	2.8	2.7	2.4	2.3	2.2			18
20	3.5	3.4	3.1	3	2.8	2.8	2.4	2.3	2.2			20
22	3.4	3.3	3.1	3	2.8	2.8	2.4	2.3	2.2	1.7		22
24	3.2	3.2	3.1	3	2.8	2.7	2.4	2.3	2.2	1.7		24
26	3.2	3.1	3	2.9	2.7	2.5	2.4	2.3	2.2	1.7		26
28	3	3	2.9	2.8	2.6	2.4	2.4	2.3	2.2	1.7		28
30	2.9	2.9	2.8	2.7	2.6	2.4	2.4	2.3	2.2	1.7		30
32	2.8	2.8	2.7	2.6	2.5	2.4	2.4	2.3	2.2	1.7		32
34	2.6	2.6	2.6	2.5	2.4	2.3	2.3	2.3	2.2	1.7		34
36	2.5	2.5	2.5	2.4	2.3	2.2	2.3	2.2	2.2	1.7		36
38	2.4	2.4	2.4	2.3	2.3	2.2	2.3	2.2	2.1	1.7		38
40	2.3	2.3	2.3	2.3	2.3	2.2	2.2	2.1	2.1	1.7		40
42	2.2	2.3	2.3	2.2	2.2	2.1	2.1	2	2	1.7		42
44	2.1	2.2	2.2	2.2	2.1	2	2.1	2	2	1.7		44
46	2	2.1	2.1	2.1	2	1.9	2	1.9	1.9	1.7		46
48	1.9	2	2	2	2	1.9	1.9	1.8	1.9	1.7		48
50	1.8	1.9	1.9	1.9	1.9	1.8	1.9	1.8	1.8	1.7		50
52	1.8	1.8	1.8	1.8	1.8	1.7	1.8	1.7	1.8	1.7		52
54	1.7	1.7	1.8	1.8	1.8	1.8	1.8	1.8	1.7	1.6		54
56	1.6	1.7	1.7	1.7	1.7	1.7	1.7	1.6	1.6	1.6		56
58	1.6	1.6	1.6	1.7	1.7	1.7	1.6	1.5	1.6	1.5		58
60	1.5	1.5	1.6	1.6	1.6	1.6	1.6	1.6	1.6	1.5		60
62	1.4	1.5	1.5	1.5	1.6	1.6	1.5	1.5	1.5	1.5		62
64	1.4	1.4	1.5	1.5	1.5	1.5	1.5	1.5	1.5	1.4		64
66	1.4	1.4	1.4	1.4	1.5	1.5	1.4	1.3	1.4	1.4		66
68	1.4	1.4	1.4	1.4	1.4	1.3	1.4	1.4	1.4	1.4		68
70	1.3	1.4	1.4	1.4	1.4	1.4	1.4	1.4	1.4	1.3		70
72		1.3	1.3	1.4	1.4	1.4	1.4	1.4	1.4	1.2		72
74		1.3	1.2	1.3	1.4	1.4	1.4	1.4	1.4	1.1		74
76			1.2	1.3	1.3	1.3	1.3	1.3	1.3	1		76
78				1.2	1.2	1.1	1.3	1.3	1.3	0.9		78
80				1.2	1.1		1.3	1.4	1.1			80
82				1.1	1.1		1.2	1.4				82
84					1		1.1					84
86							1					86
n	1	1	1	1	1	1	1	1	1	1		n
1	0+	0+	0+	0+	92+	0+	92+	46+	92+	92+		1
2	0+	0+	0+	46+	92+	92+	92+	92+	92+	100+		2
3	0+	46+	92+	92+	92+	92+	92+	92+	92+	100+		3
4	92+	92+	92+	92+	46+	92+	92+	92+	92+	100+		4
5	92+	92+	92+	92+	46+	92+	46+	92+	92+	100+		5
m/s	9	9	9	9	9	9	9	9	9	9		m/s



**Prerequisites:**

- ① Jib Length:43m
- ② The span of outriggers is 8.95m×8.6m
- ③ 360°rotation is applied
- ④ Counterweight is 100T
- ⑤ Jib offset is 20°

Radius (m)	Main boom (m) + Extension										Radius (m)	
	36.8	42	47.3	52.6	57.9	57.9	63.1	63.1	68.4	72		
22												22
24												24
26	2.5											26
28	2.4	2.3	2.3									28
30	2.3	2.3	2.3	2.2								30
32	2.2	2.2	2.2	2.1	2	1.9	1.9	1.8				32
34	2.1	2.1	2.1	2.1	2	1.9	1.9	1.8	1.7			34
36	2	2	2	2	1.9	1.8	1.8	1.8	1.7	1.5		36
38	1.9	1.9	1.9	1.9	1.9	1.8	1.8	1.7	1.7	1.5		38
40	1.9	1.9	1.8	1.8	1.8	1.8	1.8	1.8	1.7	1.5		40
42	1.8	1.8	1.8	1.8	1.8	1.7	1.7	1.7	1.7	1.5		42
44	1.7	1.7	1.7	1.7	1.7	1.7	1.7	1.7	1.6	1.5		44
46	1.7	1.7	1.7	1.7	1.7	1.7	1.6	1.6	1.6	1.5		46
48	1.6	1.6	1.6	1.6	1.6	1.5	1.6	1.6	1.6	1.5		48
50	1.6	1.6	1.6	1.6	1.6	1.6	1.6	1.6	1.5	1.5		50
52	1.5	1.5	1.5	1.5	1.5	1.5	1.5	1.5	1.5	1.4		52
54	1.5	1.5	1.5	1.5	1.5	1.5	1.5	1.5	1.5	1.4		54
56	1.4	1.5	1.5	1.5	1.5	1.5	1.4	1.4	1.4	1.4		56
58	1.4	1.4	1.4	1.4	1.4	1.3	1.4	1.3	1.4	1.4		58
60	1.4	1.4	1.4	1.4	1.4	1.4	1.4	1.4	1.4	1.4		60
62	1.4	1.4	1.4	1.4	1.4	1.4	1.4	1.4	1.4	1.4		62
64	1.4	1.4	1.4	1.4	1.4	1.3	1.4	1.4	1.4	1.4		64
66	1.4	1.4	1.4	1.4	1.4	1.4	1.4	1.4	1.4	1.4		66
68	1.4	1.4	1.4	1.4	1.4	1.4	1.4	1.4	1.4	1.3		68
70		1.4	1.4	1.4	1.4	1.4	1.4	1.4	1.4	1.3		70
72		1.4	1.3	1.4	1.4	1.4	1.4	1.4	1.3	1.3		72
74			1.3	1.3	1.3	1.3	1.3	1.3	1.3	1.2		74
76			1.2	1.3	1.3	1.3	1.3	1.3	1.3	1.2		76
78				1.3	1.3	1.3	1.3	1.3	1.3	1.1		78
80				1.2	1.2	1.2	1.3	1.3	1.2	1		80
82					1.1	1.1	1.3	1.2	1.2	0.9		82
84							1.2	1.1	1.1			84
86							1.1					86
n	1	1	1	1	1	1	1	1	1	1	1	n
1	0+	0+	0+	0+	46+	0+	92+	46+	92+	92+	1	1
2	0+	0+	0+	46+	92+	92+	92+	92+	92+	100+	2	2
3	0+	46+	92+	92+	92+	92+	92+	92+	92+	100+	3	3
4	92+	92+	92+	92+	92+	92+	92+	92+	92+	100+	4	4
5	92+	92+	92+	92+	46+	92+	46+	92+	92+	100+	5	5
m/s	9	9	9	9	9	9	9	9	9	9	m/s	

**Prerequisites:**

- ① Jib Length:43m
- ② The span of outriggers is 8.95m×8.6m
- ③ 360°rotation is applied
- ④ Counterweight is 100T
- ⑤ Jib offset is 40°

Radius (m)	Main boom (m) + Extension										Radius (m)	
	36.8	42	47.3	52.6	57.9	57.9	63.1	63.1	68.4	72		
32												32
34												34
36	1.6											36
38	1.6	1.6	1.5									38
40	1.5	1.5	1.5	1.5	1.4	1.4						40
42	1.5	1.5	1.5	1.5	1.4	1.4	1.4	1.4				42
44	1.5	1.5	1.4	1.4	1.4	1.4	1.4	1.4	1.4			44
46	1.4	1.4	1.4	1.4	1.4	1.4	1.4	1.4	1.4	1.3		46
48	1.4	1.4	1.4	1.4	1.4	1.4	1.4	1.4	1.4	1.3	1.3	48
50	1.4	1.4	1.4	1.4	1.4	1.4	1.4	1.4	1.4	1.3	1.3	50
52	1.4	1.4	1.4	1.4	1.4	1.4	1.4	1.4	1.4	1.3	1.3	52
54	1.4	1.4	1.4	1.4	1.4	1.4	1.4	1.4	1.4	1.3	1.3	54
56	1.4	1.4	1.4	1.4	1.4	1.4	1.4	1.4	1.3	1.3	1.3	56
58	1.4	1.4	1.4	1.4	1.4	1.4	1.4	1.4	1.3	1.3	1.3	58
60	1.4	1.4	1.4	1.4	1.4	1.4	1.4	1.4	1.3	1.3	1.3	60
62	1.4	1.4	1.4	1.4	1.4	1.4	1.4	1.4	1.3	1.3	1.3	62
64		1.4	1.4	1.4	1.4	1.4	1.4	1.4	1.3	1.3	1.3	64
66		1.4	1.4	1.4	1.4	1.4	1.4	1.4	1.3	1.3	1.3	66
68			1.4	1.4	1.4	1.4	1.4	1.4	1.3	1.3	1.3	68
70			1.4	1.4	1.4	1.4	1.4	1.4	1.3	1.3	1.3	70
72				1.4	1.4	1.4	1.4	1.4	1.3	1.3	1.3	72
74				1.4	1.4	1.4	1.4	1.4	1.3	1.2	1.2	74
76					1.4	1.4	1.4	1.4	1.3	1.2	1.2	76
78					1.4	1.4	1.4	1.4	1.3	1.2	1.2	78
80							1.4	1.3	1.3	1.1	1.1	80
82							1.3	1.3	1.3	1.1	1.1	82
84									1.2	0.9	0.9	84
86									0.9			86
n	1	1	1	1	1	1	1	1	1	1	1	n
1	0+	0+	0+	0+	46+	0+	92+	46+	92+	92+	92+	1
2	0+	0+	0+	46+	92+	92+	92+	92+	92+	92+	100+	2
3	0+	46+	92+	92+	92+	92+	92+	92+	92+	92+	100+	3
4	92+	92+	92+	92+	92+	92+	92+	92+	92+	92+	100+	4
5	92+	92+	92+	92+	46+	92+	46+	92+	92+	92+	100+	5
m/s	9	9	9	9	9	9	9	9	9	9	9	m/s

■ TRUCK CRANE



STC200  
Maximum Load Capacity: 20t  
Telescopic Boom: 4 Sections, 10.6-33m



STC250  
Maximum Load Capacity: 25t  
Telescopic Boom: 4 Sections, 10.65-33.5m



STC250H  
Maximum Load Capacity: 25t  
Telescopic Boom: 5 Sections, 10.5-39.5m



STC300S  
Maximum Load Capacity: 30t  
Telescopic Boom: 5 Sections, 10.6-40.5m



STC300TH  
Maximum Load Capacity: 30t  
Telescopic Boom: 4 Sections, 10.6-33.5m



STC300H  
Maximum Load Capacity: 30t  
Telescopic Boom: 5 Sections, 10.5-39.5m



STC500  
Maximum Load Capacity: 50t  
Telescopic Boom: 5 Sections, 11.5-43m



STC550  
Maximum Load Capacity: 55t  
Telescopic Boom: 5 Sections, 11.5-43m



STC600S  
Maximum Load Capacity: 60t  
Telescopic Boom: 5 Sections, 11.3-43.5m



STC750  
Maximum Load Capacity: 75t  
Telescopic Boom: 5 Sections, 11.8-45m



STC800S  
Maximum Load Capacity: 80t  
Telescopic Boom: 5 Sections, 12.2-47m



STC1000  
Maximum Load Capacity: 100t  
Telescopic Boom: 5 Sections, 13.5-52m



STC1000C  
Maximum Load Capacity: 100t  
Telescopic Boom: 6 Sections, 13.25-60m



STC1000S  
Maximum Load Capacity: 100t  
Telescopic Boom: 5 Sections, 12.25-56m



STC1200S  
Maximum Load Capacity: 120t  
Telescopic Boom: 7 Sections, 12.6-63.5m



STC1300C  
Maximum Load Capacity: 130t  
Telescopic Boom: 6 Sections, 13.3-69m



STC1600  
Maximum Load Capacity: 160t  
Telescopic Boom: 6 Sections, 13.4-69m



STC2200  
Maximum Load Capacity: 220t  
Telescopic Boom: 6 Sections, 14.25-69m

■ ALL TERRAIN CRANE



SAC1800  
Maximum Load Capacity: 180t  
Telescopic Boom: 6 Sections, 15.5-62m



SAC2200  
Maximum Load Capacity: 220t  
Telescopic Boom: 6 Sections, 13.5-69m



SAC2600  
Maximum Load Capacity: 260t  
Telescopic Boom: 6 Sections, 15.6-73m



SAC3000  
Maximum Load Capacity: 300t  
Telescopic Boom: 7 Sections, 15.4-83m



SAC3500  
Maximum Load Capacity: 350t  
Telescopic Boom: 6 Sections, 15.2-70m



SAC6000  
Maximum Load Capacity: 600t  
Telescopic Boom: 7 Sections, 17.1-90m

■ ROUGH-TERRAIN CRANE



SRC250  
Maximum Load Capacity: 25t  
Telescopic Boom: 4 Sections, 9.9-31.5m



SRC350  
Maximum Load Capacity: 35t  
Telescopic Boom: 4 Sections, 10-31.5m



SRC550  
Maximum Load Capacity: 55t  
Telescopic Boom: 4 Sections, 11.25-34.5m



SRC660H  
Maximum Load Capacity: 55t  
Telescopic Boom: 5 Sections, 11.5-43m



SRC750  
Maximum Load Capacity: 75t  
Telescopic Boom: 5 Sections, 11.8-45m



SRC1200  
Maximum Load Capacity: 120t  
Telescopic Boom: 5 Sections, 13-49m



Quality Changes the World

## SANY AUTOMOBILE HOISTING MACHINERY

Address: SANY Industrial Park, Jinzhou Development Zone,  
Changsha, Hunan, China.  
Service Hotline: 4006098318  
Email: [crd@sany.com.cn](mailto:crd@sany.com.cn)  
For more information, please visit: [www.sanygroup.com](http://www.sanygroup.com)

For our consistent improvement in technology, specifications may change without notice.  
The machines illustrated may show optional equipment which can be supplied at additional cost.

Version: 2016.1

Distributed By: